

AUT



AUCKLAND UNIVERSITY OF TECHNOLOGY
AUCKLAND, NEW ZEALAND

CODE OF PRACTICE FOR THE PASTORAL CARE OF INTERNATIONAL STUDENTS

CODE: Auckland University of Technology has agreed to observe and be bound by the Code of Practice for the Pastoral Care of International Students published by the Ministry of Education. Copies of the Code are available on request from the Institution or from the New Zealand Ministry of Education website at www.minedu.govt.nz/goto/international

IMMIGRATION: Full details of visa and permit requirements, advice on rights to employment in New Zealand while studying, and reporting requirements are available through the New Zealand Immigration Service and can be viewed on their website at www.immigration.govt.nz

ELIGIBILITY FOR HEALTH SERVICES: Most international students are not entitled to publicly-funded health services while in New Zealand. If you receive medical treatment during your visit, you may be liable for the full costs of the treatment. Full details on entitlements to publicly-funded health services are available through the Ministry of Health, and can be viewed on their website at www.moh.govt.nz

ACCIDENT INSURANCE: The Accident Compensation Corporation provides accident insurance for all New Zealand citizens, residents and temporary visitors to New Zealand, but you may still be liable for all other medical and related costs. Further information can be viewed on the ACC website at www.acc.co.nz

MEDICAL AND TRAVEL INSURANCE: International students must have appropriate and current medical and travel insurance while studying in New Zealand.

It is a requirement for all international students studying at Auckland University of Technology to have comprehensive medical and travel insurance cover. Students can either have the cover arranged by Auckland University of Technology or produce evidence at the time of application that they have insurance cover from another company that meets the approval of Auckland University of Technology.

AS AT DATE OF PRINTING EVERY ATTEMPT WAS MADE TO PRESENT ACCURATE INFORMATION IN THIS PROSPECTUS. AUCKLAND UNIVERSITY OF TECHNOLOGY RESERVES THE RIGHT TO CHANGE WITHOUT NOTICE PROGRAMMES, TERMS AND CONDITIONS BOTH BEFORE AND AFTER STUDENTS' ADMISSION.



INTERNATIONAL STUDENT CENTRE

Auckland University of Technology
Private Bag 92006, Auckland 1020, New Zealand
Phone: 64 9 921-9637, Fax: 64 9 921-9925

www.autinternational.info

THE NEW
WORLD CLASS.



international student prospectus
www.autinternational.info

AUCKLAND UNIVERSITY OF TECHNOLOGY

WELCOME – KIA ORA

MAKING THE DECISION TO LEAVE YOUR OWN COUNTRY AND PURSUE ACADEMIC QUALIFICATIONS AWAY FROM HOME IS PROBABLY ONE OF THE MOST MAJOR DECISIONS YOU WILL MAKE AS IT WILL IMPACT ON YOUR LIFE FOR MANY YEARS.

THE AUCKLAND UNIVERSITY OF TECHNOLOGY VALUES THE CONTRIBUTION INTERNATIONAL STUDENTS MAKE TO THE DIVERSITY OF THE UNIVERSITY AND WOULD LIKE TO TAKE THIS OPPORTUNITY TO INTRODUCE YOU TO WHAT WE CAN OFFER.

AUT



CONTENTS

Welcome	P1	Engineering & Applied Mathematics	P24
New Zealand	P3	Computer & Information Sciences	P26
Auckland	P3	Art & Design	P28
Studying at Auckland University of Technology	P6	Communications	P31
How to Apply	P8	Business	P33
University Pathways	P9	Languages	P37
Entry Requirements	P11	Social Sciences	P39
Student Services & Accommodation	P14	Education	P41
Applied Sciences	P15	Hospitality & Tourism	P43
Sport & Recreation	P18	Te Ara Poutama (Māori Studies)	P45
Public Health & Psychosocial Health Care Practice	P20	Code of Practice	BACK COVER

AUCKLAND UNIVERSITY OF TECHNOLOGY

University education is an exciting time of your life and AUT is an exciting university.

AUT is New Zealand's most contemporary university, with a unique profile reflecting our history and innovative approaches to teaching, learning and research. This is a university that is outward-looking, developing and adapting to the social and economic realities of which it is part.

We understand the importance of building international relationships and we place a high value on the contribution to university life that international students make. We currently have students from 65 countries studying at AUT and we celebrate this cultural diversity.

AUT graduates are responsive to the needs of the modern, fast-changing and multi-skilled work place. As a result our graduate employment record is the envy of other New Zealand universities – independent research confirms that AUT graduates are more likely to get jobs sooner.

Welcome to this edition of our prospectus. I invite you to select AUT to be your university.

Derek McCormack
Vice Chancellor

AUCKLAND UNIVERSITY OF TECHNOLOGY

WHY AUT?

- First established in 1895
- Achieved university status in January 2000
- Accredited by the New Zealand Government
- Member of NZ Vice – Chancellors' Committee
- Internationally recognised, competitive and successful university
- Close links with industry and the professions mean a high graduate employment rate – AUT has the highest graduate employment rate of any NZ university
- Small and personal interactive classes – we know your name
- Industry experience brought to the classroom
- Pathways to take you from pre-degree to postgraduate study
- Two well-positioned campuses – Wellesley in the central city and Akoranga across the Auckland Harbour Bridge
- Two intakes each year in February and July
- Graduation in March and December
- Excellent research facilities
- Committed to internationalisation
- 24,000 students (4,000 international)
- 1010 teaching staff
- 474 classrooms.

WHY NEW ZEALAND?

New Zealand consists of two main islands in the South Pacific, three hours to the east of Australia by plane, an overnight flight west of the USA, or ten to twelve hours' direct flight from most Pacific Rim countries. It is beautiful in its geographical diversity.

Comparable in size and shape to Great Britain, Colorado or Japan, it is a stable English-speaking democracy with a population of approximately four million people, making it one of the world's least crowded countries. Internationally it is known for the beauty of the landscape and the culture of the Māori – New Zealand's first nation people. The cities are clean, open and lively, with Auckland in particular showing many Pacific influences. New Zealand's oceans, mountains, and open spaces provide many opportunities for adventure tourism.

New Zealand has earned an international reputation for its politically independent stance, support for environmental causes and radical economic reforms. Its people have made significant contributions to the worlds of science and technology, the arts, medicine, conservation, food, wine, sports and fashion.

The quality of education in New Zealand ranks highly by world standards.

WHY AUCKLAND – CITY OF SAILS?

- Auckland is located in the north of the North Island, alongside some of the finest boating waters in the world.
- It is New Zealand's largest and most cosmopolitan city with a population of more than 1.2 million – 27% born in other countries. The urban area is twice the size of London.
- The city has a diverse mix of culture. Theatre, art and leading-edge fashion provide an array of cosmopolitan experiences
- Auckland's international airport has daily flights to Europe, Asia and the USA.
- Auckland's climate is mild. During December – March (summer), the average temperature ranges between 20-25 degrees C (68-77F). During June – August (winter), the average temperature range is between 10-15 degrees C (50-59F).





STUDYING AT AUCKLAND UNIVERSITY OF TECHNOLOGY

Our mission is to foster excellence, equity and ethics in learning, teaching, research and scholarship, and in so doing serve our regional, national and international communities. If you choose AUT we need to introduce you to what this means.

ACADEMIC YEAR

This is divided into two semesters.

- Semester one starts early February – ends June
- Mid-semester break is the last two weeks of April
- Semester two starts end July – ends end November
- Mid-semester break is the end of September/ October

SUMMER SCHOOL

This is designed to allow students to study outside of the standard semester programme. Students are able to make up papers or study new papers to accelerate their length of study.

- Begins early December – ends early February
- Semester break is mid-December – ends mid-January

PLEASE NOTE NOT ALL PROGRAMMES HAVE SUMMER SCHOOL

ORIENTATION

All students new to AUT must participate in Orientation. Orientation is scheduled two weeks before class starts. It includes sessions covering computer log-ins, time management, assignment preparation, course outlines, campus tours, city tours, understanding the use of email, an introduction to services and facilities available, and the meeting of staff and student mentors as

well as the opportunity of socialising with fellow students.

EXIT SURVEYS OF GRADUATE STUDENTS SHOW THAT STUDENTS WHO ATTEND ORIENTATION GENERALLY HAVE MORE ACADEMIC SUCCESS

STUDY INFORMATION

Each programme of study consists of papers that have point values. These are credited towards the total amount required to graduate from the programme of study. Students must carry a full course – load of papers which equals 120 points each year.

There are two forms of assessments: examinations, or assignments/ projects throughout the year.

TEACHING

Auckland University of Technology is unique in its teaching methods as students are not taught in large lecture theatres. Classes take place in classrooms/laboratories with a maximum of 30 students attending. Group work and tutorials are an integral part of learning. Many programmes incorporate a cooperative aspect where students work in industry to gain practical experience.

The benefits of the small classes are that academic staff know you and are readily accessible.

GRADING SYSTEM

The final outcome of the assessment of a paper is recorded as follows:

A+	A	A-	PASS WITH DISTINCTION
B+	B	B-	PASS WITH MERIT
C+	C	C-	PASS
M			PASS WITH MERIT
P			PASS
CR			CREDIT FOR PRIOR LEARNING

RECOGNITION OF PRIOR LEARNING (RPL)

- AUT awards credit for formal study undertaken in recognised tertiary institutions in New Zealand.
- Tertiary study from an overseas qualification must be assessed as equivalent in content and standard to papers taught at AUT.
- An application for credit must include an official outline of the qualification studied as well as specific descriptions of course content and individual papers studied. The application must be supported by certified copies of original documents.
- If your application for academic credit is successful you will obtain credit points for the relevant paper or papers. This means you will not have to enrol and complete those papers at AUT.
- If you believe you are entitled to credit for your previous studies complete the Recognition of Prior Learning Form which is available on www.aut.ac.nz/international_students/application/downloads.html

PLEASE BE AWARE THAT STUDENTS MUST UNDERTAKE A MINIMUM OF 80% OF A FULL-TIME STUDY LOAD TO COMPLY WITH THE CONDITIONS OF THEIR STUDENT PERMIT. (80% OF 120 POINTS = 64 POINTS FOR 1 YEAR, 80% OF 60 POINTS = 48 POINTS PER SEMESTER).



TE ARA POUTAMA

STUDYING AT AUCKLAND UNIVERSITY OF TECHNOLOGY

RESEARCH INSTITUTES

AUT Research Institutes have been established and funded by the University to bring focus to research activity. The intention is to ensure that resources are concentrated into the areas where AUT has capability. The Institutes are the key concentration of research activity, and other Centres of research activity are also developing. The Institutes and Centres also have an important training role for postgraduate students.

RESEARCH INSTITUTES

- Biotechnology Research Institute
- Centre for Communication Research
- Earth and Oceanic Sciences Research Institute
- Engineering Research Institute
- Institute for Information Technology Research (IITR)
- Institute of Public Policy
- National Institute for Public Health and Mental Health Research
- New Zealand Tourism Research Institute (NZTRI)
- Physical Rehabilitation Research Centre
- The Knowledge Engineering and Discovery Research Institute (KEDRI).

STUDY ABROAD

This programme is for students enrolled at overseas universities. They are able to come and study at AUT for one or two semesters, choose from a comprehensive range of subjects and have credits transferred back to their home university.

FURTHER DETAILS ARE AVAILABLE ON THE AUT WEBSITE WWW.AUTSTUDYABROAD.INFO

STUDY EXCHANGE

This is an opportunity for students to live in New Zealand and study at AUT while gaining credit towards their degree in their own university. AUT has student exchange agreements with partner institutions in many countries, including Canada, China, France, Germany, Japan, Norway, Sweden, the UK and the USA.

THERE IS A LIST OF EXCHANGE UNIVERSITIES TO CHOOSE FROM AND DETAILS ARE AVAILABLE FROM WWW.AUTEXCHANGE.INFO

SCHOLARSHIP

Each year a number of students are able to study with the assistance of the following scholarships:

- New Zealand Development Scholarships (NZDS) www.nzaid.govt.nz

- New Zealand International Postgraduate Research Scholarships scholarships@educationnz.org.nz
- New Zealand International Doctoral Research Scholarships (NZIDRS) www.newzealandeducated.com

WORKING IN NEW ZEALAND/VISA INFORMATION

Students can work 20 hours per week during the academic year and full-time during vacation periods.

Students should ask their local agent/educational consultant or nearest New Zealand Embassy for details of visa requirements as these may change from time to time. Full details of visa and permit requirements, advice on rights to employment in New Zealand while studying, and reporting requirements are available through the NZIS website www.immigration.govt.nz.

New and returning student visas are processed during Orientation at the Student Support Centre, AUT.

PLEASE NOTE THAT STUDENTS CANNOT EARN ENOUGH TO FUND THEIR STUDIES BY WORKING.

HOW TO APPLY

To study at AUT students need to apply directly to the University through the International Student Centre, or through an AUT Registered Agent.

We recommend applications are submitted two months prior to semester start date.

1 Applicants must complete the International Student application form, ensuring all sections are completed in full, and that the programme of choice is clearly indicated. Please attach:

- Certified copy of English language test (Academic IELTS, TOEFL or recognised equivalent). **Note: these results are valid for two years from exam date)**
- Certified copies of all relevant academic documents (transcripts as well as award certificate)
- Certified copy of birth certificate or passport

- Evidence of relevant work experience (including references)
 - Two passport-sized photographs
- Please visit: www.autinternational.info to check if there are any additional application requirements for entry to your programme of choice.

2 If you are submitting your application from overseas for the upcoming semester it will take up to one week to assess (post-graduate may take longer). When we receive your application you will receive an acknowledgement email/letter.

3 Successful applicants will receive an Offer of Place letter, which will give advice on tuition fees, enrolment fee, insurance fees, date of payment, methods of payment and a copy of the University's refund policy.

4 To accept an Offer of Place, applicants must sign one copy of the Offer of Place and return it, with full payment of all fees, by the due date.

5 When your fees have been received, a receipt will be issued. This must be presented to the nearest New Zealand Immigration Services office with a copy of your Offer of Place in order to obtain a student permit/ visa.

PAYMENT OF FEES

Receiving an Offer of Place does not guarantee you a place. To guarantee a place on the programme of choice, tuition, enrolment and insurance fees must be paid by the due date. Please note some programmes have a limited intake, so do not delay making payment.

NOTE: INTERNATIONAL STUDENTS CANNOT PAY BY INSTALMENTS.



PATHWAYS TO THE UNIVERSITY

ENGLISH LANGUAGE

AUT ENGLISH LANGUAGE STUDIES

For students who do not meet the entry requirements, the School of Languages in the Faculty of Applied Humanities offers three English for Academic Study preparation programmes. These offer students a solid background in the language skills, research processes and critical thinking required for academic study in a New Zealand University. The programmes are:

- Diploma in English Language
- Certificate in English for Academic Study
- Certificate in Introduction to English for Academic Study

Students who do not meet the English entry requirements can also enrol in one of the English programmes taught through International House.



AUT INTERNATIONAL HOUSE

- AUT International House is located in the heart of downtown Auckland close to the main AUT campus. It is a modern, spacious school with the latest technological equipment.
- Students have use all of the AUT facilities such as libraries, the learning centre, medical centre and sports facilities.
- Residential accommodation is available for students in the Wellesley Student Apartments, located only a 5-minute walk from AUT International House.

ENTRANCE REQUIREMENTS

- Minimum age 18.
- There is an oral and written placement test on arrival.
- Monthly start dates.

COURSE INFORMATION

- General English classes at all levels, except for beginners.
 - Business English
 - IELTS Preparation
 - IELTS/EAP (English for Academic Purposes)
 - Cambridge Examination Courses
- Please visit our website for more information on courses, dates and fees:

www.autinternationalhouse.info
 email: inhouse@aut.ac.nz

AUT CERTIFICATES AND DIPLOMAS

- These introductory programmes provide a solid foundation for students who do not reach the degree entry requirements. Lengths of programmes range from one semester to two years.
- Students are able to staircase their academic study from certificate to diploma to degree.

FOUNDATION COURSES

AUT FOUNDATION CERTIFICATE

NORTON COLLEGE

The Auckland University of Technology Foundation Certificate is delivered by Norton College, an independent education provider managed by Academic Colleges Group.

- Located in the central business district, a 5-minute walk to central campus
- Foundation Certificates in Business, Science, Electronics, Engineering and Mathematics
- Successful completion of prescribed grades guarantees entry to an appropriate undergraduate degree (with the exception of Nursing)
- Eight-month duration
- Three starting dates per year – January, May and September
- Provides focus in specialist areas from the start of the programme
- Curriculum incorporates the latest developments in five specialist areas, includes core training in English and independent learning skills
- Students have access to Auckland University of Technology's library, learning centre and sports facilities
- ACG has one of the best NZ records in international education.

www.acg.ac.nz



TAYLOR'S AUCKLAND FOUNDATION YEAR

TAYLORS COLLEGE

Taylor's College is one of the leading university preparation specialists in New Zealand and Australia. The Taylor's Auckland Foundation Year (TAFY) has been specifically developed to prepare international students for entry into undergraduate programmes at Auckland University of Technology. Entrance is based on the academic and English proficiency requirements published in the Taylor's prospectus.

The college campus is located in the heart of Auckland City and includes fully-equipped science laboratories, computer facilities, student welfare team, library, common room, health-centre and tertiary counsellor.

For more information please contact:
infonz@sga.edu.au
www.taylorscollege.com



ACADEMY FOR THE INTERNATIONAL COMMUNITY (AIC)

- Located in the academic centre of Auckland in a purpose-built building
- Offers English Language Programmes, English for Academic Purposes, Certificate in Foundation Studies, TOELF, TOEIC and Cambridge EFL exams: FCE, CAE
- English Language programmes range from beginners to advanced with entry every four weeks
- English for academic purposes prepares students for Foundation and University studies with entry every four weeks
- Certificate in Foundation Studies is 38 weeks with entry dates in January and July.

www.aic.ac.nz



ENTRY REQUIREMENTS

ACADEMIC ENTRY REQUIREMENTS

BACHELOR DEGREE PROGRAMMES

All applicants are required to meet the University's minimum level of entry to study a bachelors degree. However because of competition for places, entry level above the minimum may be required for admission to some programmes.

POSTGRADUATE PROGRAMMES

Entry into AUT postgraduate and masters programmes may vary between Faculties. Basic entry requirements are a successfully completed bachelor degree in the same area of study from a recognised university and a recognized English Language test that meets the language requirement. Applicants may also be required to provide evidence of relevant work/research experience.

For postgraduate applications where the student will be undertaking a thesis, a research proposal will be required.

ENGLISH ENTRY REQUIREMENTS

All AUT lectures and classes are taught in English. Applicants must demonstrate competence in English by meeting the AUT English proficiency requirements. Students who do not have English as their first language must be able to show evidence of their English language skills.

Accepted evidence must be one of the following achieved within the **past two years:**

- 1 **IELTS** – Academic module only
- 2 **TOEFL** – with Test of Written English (TWE), or Essay Writing
- 3 **NEW ZEALAND HIGH SCHOOL GRADUATES** – NCEA with a

minimum of 8 credits at level 2 or higher in English (4 credits in Reading and 4 credits in Writing). Please note that students entering through NCEA are not permitted to submit an IELTS in lieu of NCEA.

- 4 **AUT CERTIFICATE IN ENGLISH FOR ACADEMIC STUDIES** – minimum of B or B+ in all subjects (dependent on selected programme), and a recommendation from Programme Leader.
- 5 **INTERNATIONAL BACCALAUREATE** Applicants who have done previous tertiary level study in English at an accredited university may have their English proficiency requirements waived. However the International Student Centre recommends all applicants submit an IELTS test result with their application.

UNIVERSITY ENTRY EQUIVALENTS

DIPLOMA

EQUIVALENT TO NEW ZEALAND YEAR 12 (6TH FORM) OR EQUIVALENT
CHINA • YEAR 3 CERTIFICATE OF GRADUATION, MINIMUM 75%
FIJI • FIJI SCHOOL LEAVING CERTIFICATE
CANADA • GRADE 12 CERTIFICATE
GERMANY • MITTLERE REIFE / REALSCULABSCHLUSS
HONG KONG • HK CERTIFICATE OF EDUCATION
INDIA • HIGHER SECONDARY CERTIFICATE (STANDARD XII), MINIMUM 65%

UNDERGRADUATE DEGREE

EQUIVALENT TO NEW ZEALAND YEAR 13 (BURSARY) OR EQUIVALENT
CHINA • SUCCESSFUL COMPLETION OF ONE YEAR IN A RECOGNISED UNIVERSITY
FIJI • FIJI FORM 7, AGGREGATE OVER 4 SUBJECTS OF 250, WITH A MINIMUM OF 50 IN ENGLISH • USP FOUNDATION YEAR, 7 PASSES WITH A MINIMUM OF C IN COMMUNICATION
CANADA • AVERAGE OF 60% ACROSS 6 SUBJECTS (INCLUDING ENGLISH IN THE GRADE 12 HIGH SCHOOL CERTIFICATE)
GERMANY • SUCCESSFUL COMPLETION OF SENIOR HIGH SCHOOL – ARBITUR
HONG KONG • THREE HONG KONG ADVANCED LEVEL PASSES AT GRADEC OR HIGHER
INDIA • ALL INDIA SENIOR SECONDARY SCHOOL CERTIFICATE MINIMUM AVERAGE 75% IN BEST 4 SUBJECTS

PLEASE NOTE: Some programmes may require higher entry levels. Others have specific subject requirements. These are listed under the programmes concerned.

DIPLOMA

EQUIVALENT TO NEW ZEALAND YEAR 12 (6TH FORM) OR EQUIVALENT
INDONESIA • SMU 7.0
JAPAN • UPPER SECONDARY SCHOOL LEAVING CERTIFICATE
KOREA • HIGH SCHOOL DIPLOMA
MALAYSIA • SPM, OR • CHINESE UNIFIED EXAMS
MEXICO
NORWAY
RUSSIA • CERTIFICATE OF SECONDARY EDUCATION; OR • CERTIFICATE OF MATURITY
SINGAPORE • CEO O LEVEL IN 4 SUBJECTS
SRI LANKA • GCE O LEVELS
SWEDEN
TAIWAN • SENIOR HIGH SCHOOL
THAILAND • MATAYOM 6
UAE • 70% OR BETTER IN TAWAJIHYA (SECONDARY SCHOOL CERTIFICATE)
UK • GCSE (HIGHER GRADES)
USA • HIGH SCHOOL DIPLOMA
VIETNAM • UNIVERSAL GRADUATION WITH A GRADE OF 7 WHEN OUT OF 10 OR 30 WHEN OUT OF 40

PLEASE NOTE: Some programmes may require higher entry levels. Others have specific subject requirements. These are listed under the programmes concerned.

UNDERGRADUATE DEGREE

EQUIVALENT TO NEW ZEALAND YEAR 13 (BURSARY) OR EQUIVALENT
INDONESIA • SUCCESSFUL COMPLETION OF ONE YEAR'S TERTIARY STUDY • SMU, MINIMUM 8.5
JAPAN • SUCCESSFUL COMPLETION OF HIGH SCHOOL DIPLOMA WITH A B AVERAGE • SUCCESSFUL COMPLETION OF ONE YEAR IN A RECOGNISED UNIVERSITY • SUCCESSFUL COMPLETION OF A JUNIOR COLLEGE DEGREE DIPLOMA OF 2-3 YEARS DURATION
KOREA • A MINIMUM OF 250 IN THE KOREAN UNIVERSITY ENTRANCE EXAMINATION
MALAYSIA • STPM WITH 3 PASSES WITH ONE C OR BETTER • A MAXIMUM OF 15 POINTS OVER 6 ACADEMIC SUBJECTS IN THE UNIFIED EXAMINATION CERTIFICATE • A LEVELS WITH AT LEAST 3 RESULTS WITH 1 GRADE AT LEVEL C OR ABOVE • SAM WITH A TERTIARY ENTRANCE RANK OF 74.0
MEXICO • SUCCESSFUL COMPLETION OF ONE YEAR'S TERTIARY STUDY
NORWAY • SUCCESSFUL COMPLETION OF VIDEREGAENDE SKOLE
RUSSIA • SUCCESSFUL COMPLETION OF ONE YEAR'S TERTIARY STUDY
SINGAPORE • GCE A LEVELS, WITH 3 PASSES
SRI LANKA • GCE A LEVELS, WITH ONE C, OR BETTER
SWEDEN • SUCCESSFUL COMPLETION OF AVGANGSBETYG • SUCCESSFUL COMPLETION OF STUDENT EXAMEN • SUCCESSFUL COMPLETION OF SLUTBETYG FROM A GYMNASIUM
TAIWAN • SUCCESSFUL COMPLETION OF SENIOR HIGH SCHOOL AND A JUNIOR 5 YEAR COLLEGE DIPLOMA • SUCCESSFUL COMPLETION OF ONE YEAR'S TERTIARY STUDY
THAILAND • MATAYOM 6 WITH A GPA OF 2.5 OR HIGHER, WITH A RELEVANT SUBJECT MIX • SUCCESSFUL COMPLETION OF ONE YEAR'S TERTIARY STUDY
UAE • SUCCESSFUL COMPLETION OF ONE YEAR'S TERTIARY STUDY
UK • SUCCESSFUL COMPLETION OF GCE A LEVELS
USA • HIGH SCHOOL DIPLOMA PLUS SAT
VIETNAM • SUCCESSFUL COMPLETION OF ONE YEAR'S TERTIARY STUDY



SCHOOL OF BUSINESS

STUDENT SERVICES AND FACILITIES

Auckland University of Technology has all the services you need to make your transition successful from your home country and to progress you through to being a student who is confident and able to achieve in a comfortable environment.

INTERNATIONAL STUDENT CENTRE

- This is the first point of contact for international students needing help and information.
- Located on campus with a team of friendly people to help you with applications and enrolment.
- Offers workshops and counselling on programme choices

INTERNATIONAL STUDENT SUPPORT UNIT (ISSU)

This team of friendly people welcome you at Orientation and are here to help with adjusting to living and learning in a new culture. Assistance is offered with student visas, permits, (done on campus) homesickness and culture shock. Social events are also organised throughout the year to make your time at AUT rewarding and enjoyable.

THE TEAM HAS A 24-HOUR EMERGENCY LINE 021 774 570

- The Career Centre
 - Health Clinic
 - Counselling
 - Learning Support
 - Student Mentors
 - Libraries
 - Fitness Centres
 - Computer Suites
 - Disability Resource Office
 - Student Clubs
- <http://ausm.org.nz>

WHERE TO STAY AT AUT

Once you have made the decision to study with us it is very important that you book your accommodation as soon as possible as our Halls of Residence operate on a first-come, first-served basis.

All AUT Halls of Residence have been assessed by the University and are suitable for international students studying at AUT.

- Halls are all located on campus and require a contract for one semester
- Single rooms and apartment style accommodation are available
- There is 24-hour security surveillance
- On-site managers
- Food and linen packages available
- Internet connections
- TV lounges and common areas

WELLESLEY STUDENT APARTMENTS

- A new high-rise building which consists of 4 or 5-bedroom furnished apartments with their own bathrooms and kitchen.

MOUNT TERRACE

- Modern high-rise building which is a mix of single rooms or apartment-style accommodation.

AKORANGA STUDENT VILLAGE

- A complex of 36 townhouse-type apartments set on landscaped grounds and located in the Akoranga campus on the North Shore of Auckland.

There are other accommodation options available such as non-AUT Halls of Residence, homestays, and sharing an apartment with other people (flatting).

FURTHER ACCOMMODATION INFORMATION IS AVAILABLE ON WWW.AUTINTERNATIONAL.INFO

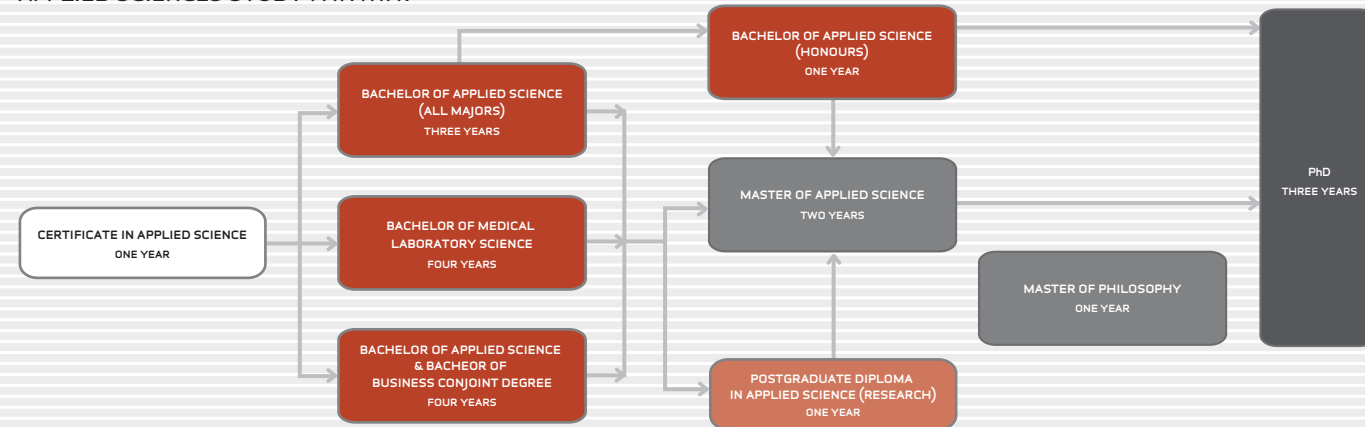
APPLIED SCIENCES

faculty of health and environmental sciences

The Applied Sciences division of the Faculty of Health and Environmental Sciences is focused on preparing students for careers in a wide range of industries and professions. Close links with industry means graduates are prepared to go straight into jobs. Over 90% of our graduates get jobs related to their studies. We also encourage original research.

The Research Centres are Body Composition and Metabolism, Centre for Applied Science International Development, Earth and Oceanic Sciences and Glycoscience.

APPLIED SCIENCES STUDY PATHWAY



PLEASE NOTE: 1. Completion of one programme does not guarantee entry to a higher-level programme. 2. Students are encouraged to apply for the programme for which they are best qualified and are not necessarily required to enrol in the programme that appears at the start of the above diagram. 3. Some programmes in the above study pathways diagram may be prerequisites to – and not credit towards – higher level programmes.

CERTIFICATE IN APPLIED SCIENCE

DURATION:	1 YEAR
SEMESTER INTAKE:	FEBRUARY/JULY
IELTS:	5.0 (IN ALL BANDS)

This is a scientific foundation programme for students who do not meet academic entry level for degree study and who also are undecided which major they want to take. The programme covers basic laboratory and fieldwork skills, working with documents, spreadsheets and report writing.

COURSE OF STUDY FOR PRE-CHIROPRACTIC

DURATION:	1 YEAR
SEMESTER INTAKE:	FEBRUARY
IELTS:	6.0 (WRITING 6.0, SPEAKING 6.0) ALL OTHER BANDS 5.5.

This course prepares students for entry to the New Zealand College of Chiropractic's Bachelor of Chiropractic. Students will gain a sound knowledge of general human anatomy and physiology, and a basic understanding of biochemistry.

Completion of this programme does not guarantee graduates entry to the Bachelor of Chiropractic.

BACHELOR OF APPLIED SCIENCE IN APPLIED CHEMISTRY

DURATION:	3 YEARS
SEMESTER INTAKE:	FEBRUARY/JULY
IELTS:	6.0 (WITH NO BAND LOWER THAN 5.5)

This degree covers a range of chemistry principles relevant to many industries, with an emphasis on analytical techniques. Environmental, food chemistry and biochemistry topics are covered and process engineering is introduced. Students acquire skills in practical laboratory, report writing, presentation and statistical data analysis.

BACHELOR OF APPLIED SCIENCE IN APPLIED MATHEMATICS

DURATION:	3 YEARS
SEMESTER INTAKE:	FEBRUARY/JULY
IELTS:	6.0 (WITH NO BAND LOWER THAN 5.5)

This degree develops knowledge of applied maths, statistics and different research methods including statistics. Students learn to design surveys and research methods, analyse data and gain knowledge of computer database programmes.

BACHELOR OF APPLIED SCIENCE IN AQUACULTURE

DURATION:	3 YEARS
SEMESTER INTAKE:	FEBRUARY/JULY
IELTS:	6.0 (WITH NO BAND LOWER THAN 5.5)

This degree gives grounding in basic science for focusing on marine ecology and aquaculture. Students acquire a broad understanding of aquaculture practices in New Zealand and throughout

the world which will enable better management of marine resources. Practical skills are improved as well as report writing, presentations and statistical data analysis.

BACHELOR OF APPLIED SCIENCE IN APPLIED MICROBIOLOGY

DURATION:	3 YEARS
SEMESTER INTAKE:	FEBRUARY/JULY
IELTS:	6.0 (WITH NO BAND LOWER THAN 5.5)

This degree covers basic microbiological techniques, environmental microbiology, industrial uses of microbiology and biotechnology, molecular biology, food-borne diseases and food safety. Students gain an understanding of microbiology used in industry which includes practical laboratory skills, report writing, presentations and statistical data analysis.

BACHELOR OF APPLIED SCIENCE IN ENVIRONMENTAL STUDIES

DURATION:	3 YEARS
SEMESTER INTAKE:	FEBRUARY/JULY
IELTS:	6.0 (WITH NO BAND LOWER THAN 5.5)

This degree gives students grounding in ecological principles of marine, freshwater and terrestrial ecosystems. Key skills learnt are knowledge of environmental issues, conservation strategies and planning procedures, data collection and analysis.

BACHELOR OF APPLIED SCIENCE IN FOOD SCIENCE

DURATION:	3 YEARS
SEMESTER INTAKE:	FEBRUARY/JULY
IELTS:	6.0 (WITH NO BAND LOWER THAN 5.5)

This degree covers the principles of microbiology and chemistry to give an understanding of food product development and food safety. Students learn about food analysis, food chemistry, food microbiology, HACCP (Hazard Analysis Critical Control Point), sensory evaluation, food packaging and legal issues around food.

BACHELOR OF APPLIED SCIENCE IN HEALTH PROTECTION

DURATION:	3 YEARS
SEMESTER INTAKE:	FEBRUARY/JULY
IELTS:	6.0 (WITH NO BAND LOWER THAN 5.5)

This degree covers a wide range of disciplines including resource management, environmental monitoring, legal issues around food, toxicology and communicable disease control. Students acquire the competencies required by the NZ Ministry of Health for designation as a Health Protection Officer. These range from an understanding of environmental health to an ability to deal with communicable diseases, food safety and environmental issues.

BACHELOR OF APPLIED SCIENCE IN HUMAN ANATOMY AND PHYSIOLOGY

DURATION:	3 YEARS
SEMESTER INTAKE:	FEBRUARY/JULY
IELTS:	6.0 (WITH NO BAND LOWER THAN 5.5)

This degree provides a strong foundation for a career in human health and the medical sector and covers anatomy and physiology with an emphasis on the cardio-respiratory systems. It includes pharmacology, nutrition, biophysics and pathology.

BACHELOR OF MEDICAL LABORATORY SCIENCE

DURATION:	4 YEARS
SEMESTER INTAKE:	FEBRUARY
IELTS:	6.0 (WITH NO BAND LOWER THAN 5.5)

Medical laboratory scientists' work is vital in the diagnosis of disease and in monitoring treatment. Students gain skills in accurate observation and in the collection and recording of test results. Year Four is spent in a clinical placement.

Specialisations are clinical chemistry, haematology, histology, immunology, medical cytology, medical microbiology and transfusion science. Graduates are able to register and practise as medical laboratory scientists once they have fulfilled conditions stipulated by the Medical Laboratory Scientists Board.

BACHELOR OF APPLIED SCIENCE AND BACHELOR OF BUSINESS (CONJOINT DEGREE)

DURATION:	4 YEARS
SEMESTER INTAKE:	FEBRUARY/JULY
IELTS:	6.5 (WITH NO BAND LOWER THAN 6.0)

A double qualification provides students with a wide choice of employment opportunities and greater flexibility in career choices. Any of the Applied Science majors can be combined with Marketing and Management e.g. Applied Chemistry in the Bachelor of Applied Science and Marketing in the Bachelor of Business prepares a student for a career in the chemical products marketing. Environmental Studies can be coupled with Tourism for a career in eco-tourism.

BACHELOR OF APPLIED SCIENCE (HONOURS)

DURATION:	1 YEAR
SEMESTER INTAKE:	FEBRUARY
IELTS:	6.5 (WITH NO BAND LOWER THAN 6.0)

This gives students the opportunity to gain accelerated entry into doctoral study or enhance practice and employment opportunities. Potential students will be identified during the third year of a Bachelor of Applied Science.

POSTGRADUATE DIPLOMA IN APPLIED SCIENCE (RESEARCH)

DURATION:	1 YEAR
SEMESTER INTAKE:	JANUARY
IELTS:	6.5

This programme is for students wishing to fill positions involving scientific research and problem solving with industry or government organizations. Students perform an in-depth investigation in a chosen area of research and prepare a thesis covering their methodology as well as the analysis and evaluation of results.

APPLIED SCIENCES – CONTINUED

MASTER OF APPLIED SCIENCE

DURATION: 2 YEARS

SEMESTER INTAKE: FEBRUARY

IELTS: 6.5

The first year consists of papers and the second-year students do an approved thesis. Currently the Faculty has active groups working in areas of: molecular biology, cell culture, lipid and protein chemistry, analytical chemistry,

environmental science, water supply in developing countries, blood-group chemistry, glyco-science, physiology, metabolism, forest ecology, aquaculture and marine science.

DOCTOR OF PHILOSOPHY

This degree is awarded after the successful completion of three years, or the equivalent, of concentrated research

effort constituting an original and substantial contribution of knowledge. The following areas are currently available: metabolism, environmental science, marine biodiversity, biogeography, environmental problems in developing countries or water problems.

SOME OF AUT'S APPLIED SCIENCE PROGRAMMES SHARE COMMON GROUND WITH SOME OF THE HEALTH SCIENCE PROGRAMMES.

MIKAELA MANNING

BOSTON, MASSACHUSETTS, USA
PRE-CHIROPRACTIC

Four years ago I visited New Zealand as a tourist and enjoyed the pace of life and the outdoors. I graduated from Syracuse University with a BA in Liberal Arts and worked as an art consultant which was an interesting career but found myself being interested in health, nutrition and alternative medicine. When doing a web search I found the Auckland University of Technology offered the programme I wanted and in the country I liked so the decision was made.

I am really enjoying the International Campus as it has a great urban feel to it. Staff are so helpful and the facilities are excellent so I am not disappointed with my return to study here. After I graduate from my programme I hope to move into studying chiropractic medicine in NZ.

My boyfriend is also studying in NZ so we are enjoying having outdoor picnics, attending concerts, swimming and enjoying the ambience of a city that is cosmopolitan but has very accessible outdoors.



SPORT & RECREATION

faculty of health and environmental sciences

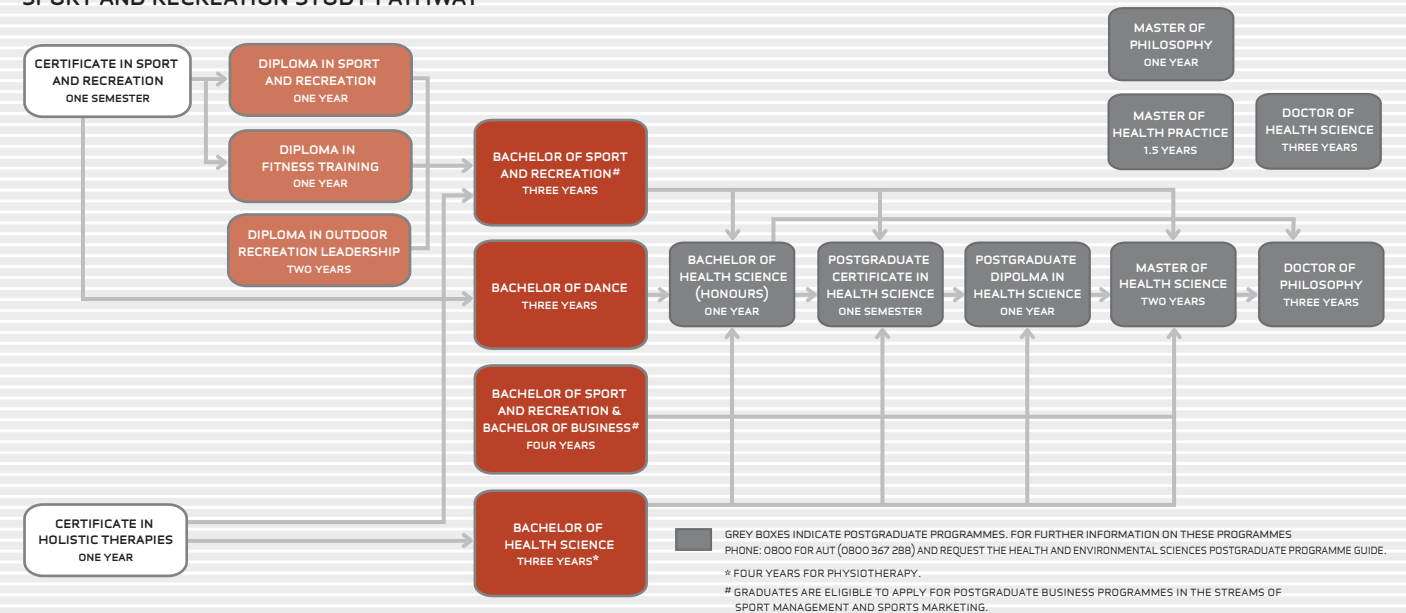
AUT have developed new programmes and advanced qualifications in line with modern advances in sports and fitness. Innovative programmes have been added in health, fitness, sport and outdoor recreation, with the inclusion of dance and holistic therapies.

The Institute of Sport and Recreation New Zealand (ISRNZ) is a multi-disciplinary research facility within the Division of Sport and Recreation, Auckland University of Technology. The ISRNZ is a flagship for the research activities of the Division and provides a training ground for applied sports scientists. Through the practical application of research the NZISRR contributes to the sport and recreation community and provides a training ground for applied sport and recreation practitioners. The ISRNZ is based at AUT Akoranga with a satellite at AUT Sport Performance Research Centre at the Millennium Institute of Sport and Health. The ISRNZ has links with the AUT Sport Performance Centre, the New Zealand Academy of Sport network, the AUT MOVE Dance Foundation and Sport and Recreation New Zealand (SPARC).

The streams of the ISRNZ are:

- Exercise science – Physical conditioning
- Exercise science – Human movement
- Exercise science – Exercise physiology
- Physical activity, nutrition and health
- Holistic therapy
- Coaching and physical education
- Sport and recreation management
- Professional practice
- Dance and drama
- Outdoors

SPORT AND RECREATION STUDY PATHWAY



PLEASE NOTE: 1. Completion of one programme does not guarantee entry to a higher-level programme. 2. Students are encouraged to apply for the programme for which they are best qualified and are not necessarily required to enrol in the programme that appears at the start of the above diagram. 3. Some programmes in the above study pathways diagram may be prerequisites to – and not credit towards – higher level programmes.

CERTIFICATE IN SPORT AND RECREATION

DURATION: 1 SEMESTER
SEMESTER INTAKE: FEBRUARY/JULY
IELTS: 5.5

This course gives students an opportunity to pursue a coaching career or career in the fitness industry. Skills and knowledge gained include the principles and practices of planning, delivering, officiating, refereeing and evaluating sport. The programme also includes learning how to assess clients' fitness and prescribe exercise programmes.

CERTIFICATE IN HOLISTIC THERAPIES

DURATION: 1 YEAR
SEMESTER INTAKE: FEBRUARY
IELTS: 5.5

This course provides a sound grounding in the theory and practice of beauty skills enabling students to work as qualified beauty therapists. The programme uses modern facilities including AUT's public beauty clinic. Students may undertake internationally recognised exams: CIDESCO and CIBTAC.

DIPLOMA IN SPORT AND RECREATION

DURATION: 1 YEAR
SEMESTER INTAKE: FEBRUARY
IELTS: 6.5 (NO BAND LOWER THAN 5.5)

This diploma provides students with the range of practical and supervisory skills required for the recreation industry. Programme content includes: exercise science, skills acquisition and generic coaching, programme and event management, quality service, practical skills and supervisory skills.

HEALTH – CONTINUED

DIPLOMA IN MENTAL HEALTH SUPPORT WORK

DURATION:	1 YEAR
SEMESTER INTAKE:	FEBRUARY
IELTS:	6.0 (WITH NO BAND LOWER THAN 5.5)

This is a course designed for mental health support workers. Theoretical and practical skills are developed in problem analysis and solving, planning, managing multiple demands and communication, safety, ethics and law. It also covers the role of family, whanau and the community in supporting people with mental illness

BACHELOR OF HEALTH SCIENCE – COMMON SEMESTER ENTRY

DURATION:	3 YEARS
SEMESTER INTAKE:	FEBRUARY/JULY
IELTS:	6.5

Due to competition for places, applicants may be unsuccessful at first in gaining admission to the BHSc degree of their choice. Unsuccessful applicants can enrol in the BHSc common first semester, which is made up of four papers.

Students are provided with information about all BHSc majors. At the end of the semester they may apply for their degree again, or any of the other majors in the Bachelor of Health Science. Selection is based on students' first semester grades.

BACHELOR OF HEALTH SCIENCE IN APPLIED MENTAL HEALTH

DURATION:	3 YEARS
SEMESTER INTAKE:	FEBRUARY
IELTS:	6.5

This degree prepares students for general careers in the area of mental health. Graduates find work in mental and public health settings, district health boards and the justice sector. Subjects include interpersonal skills, psychology, health promotion, family violence, abuse, rehabilitation and recovery as well as a range of papers on the theories surrounding mental health.

BACHELOR OF HEALTH SCIENCE IN HEALTH PROMOTION

DURATION:	3 YEARS
SEMESTER INTAKE:	FEBRUARY/JULY
IELTS:	6.5

This degree studies the science of human function, disease prevention and research and non-clinical understandings of health. Analysis of ideas, ethics and legal issues is balanced with practical work. The programme includes a range of work-experience placements to choose from.

Can be completed as a double major with Oral Health or Psychology.

BACHELOR OF HEALTH SCIENCE (MIDWIFERY)

DURATION:	3 YEARS
SEMESTER INTAKE:	FEBRUARY
IELTS:	7.0 (7.0 IN WRITING AND SPEAKING, NO LOWER THAN 6.5 IN OTHER BANDS)

Practical, hands-on experience is a vital component of midwifery and more than half of this programme is clinical practice. Students work in a variety of settings – home, hospital and birthing units. Subjects studied include normal childbirth and midwifery care, breastfeeding and lactation, complicated childbirth and neonatal care, bioscience, communication and medical concepts.

BACHELOR OF HEALTH SCIENCE (NURSING)

DURATION:	3 YEARS
SEMESTER INTAKE:	FEBRUARY/JULY
IELTS:	6.5 (6.5 IN READING AND LISTENING, NO LOWER THAN 6.0 IN OTHER BANDS)

This degree covers the theories and skills required to become a practising nurse. Subjects include wellness of families and individuals, acute hospital care, care for mental and physical disabilities and caring for clients with complex health needs. Over the three years at least 1500 hours are allocated to clinical (practical) learning.

Graduates take the Nursing Council of New Zealand's State Examination which makes them registered comprehensive nurses.

BACHELOR OF HEALTH SCIENCE (OCCUPATIONAL THERAPY)

DURATION:	3 YEARS
SEMESTER INTAKE:	FEBRUARY
IELTS:	6.5

Occupational therapy relates to health and wellbeing, particularly in relation to

recovery from illness or injury and a return to normal life. Students look at the anatomy, psychology of health in the context of New Zealand and theory and skills specific to occupational therapy. Graduates may register as occupational therapists in New Zealand and apply to practice in other countries.

BACHELOR OF HEALTH SCIENCE IN ORAL HEALTH

DURATION:	3 YEARS
SEMESTER INTAKE:	FEBRUARY
IELTS:	6.5

Half of this degree is done in clinical practice so it prepares students for work as a dental therapist in the public health sector or private practice. Key subjects include examination, diagnosis and recognition of abnormalities, administration of local anaesthetic, fillings, capping teeth, interpersonal skills and oral health education and promotion.

Students can also complete a double major in Oral Health and Health Promotion.

BACHELOR OF HEALTH SCIENCE IN PARAMEDIC

DURATION:	3 YEARS
SEMESTER INTAKE:	FEBRUARY
IELTS:	6.5

This is the only paramedic degree offered in New Zealand and trains students for entry into the challenging and vital world of the paramedic. Practical work constitutes over one third of the programme and clinical experience is gained in ambulance services, hospitals and community health settings. The degree is taught by experienced paramedics, emergency nurses, anatomists, doctors, pharmacologists and other specialists.

BACHELOR OF HEALTH SCIENCE (PHYSIOTHERAPY)

DURATION:	4 YEARS
SEMESTER INTAKE:	FEBRUARY
IELTS:	6.5 (WITH NO BAND LOWER THAN 6.0)

This degree teaches both the physiological and psychological aspects of physiotherapy care. Graduates find work in a range of

rehabilitation areas from sports to accident victims and community health. The programme includes at least 1000 hours of clinical practice in placements, more than one of which is situated outside the Auckland region.

BACHELOR OF HEALTH SCIENCE IN PODIATRY

DURATION:	3 YEARS
SEMESTER INTAKE:	FEBRUARY
IELTS:	6.5

This degree specialises in the treatment of foot problems in the elderly, children, sports people and the working population. Students learn how to care for patients with arthritis, diabetes, vascular disease, and biomechanical disorders of the foot and lower leg. Clinical training is undertaken in hospitals, community facilities and AUT's own clinic.

BACHELOR OF HEALTH SCIENCE IN PSYCHOLOGY

DURATION:	3 YEARS
SEMESTER INTAKE:	FEBRUARY
IELTS:	6.5

This degree gives students understanding of the key elements in psychological health. Skills include recognising the range of factors that influence psychological health, intervention, research, communication skills, interpersonal skills, analytical and critical thinking skills.

Available as a double major with Applied Mental Health or Health Promotion or a conjoint degree with the Bachelor of Business.

To work as registered psychologists in New Zealand, students must complete approved postgraduate study in psychology. AUT's Bachelor of Health Science (Honours), Master of Health Science and Postgraduate Diploma in Counselling Psychology are all relevant programmes.

BACHELOR OF HEALTH SCIENCE IN PSYCHOLOGY AND BACHELOR OF BUSINESS (CONJOINT DEGREE)

DURATION:	4 YEARS
SEMESTER INTAKE:	FEBRUARY
IELTS:	6.0 (IN ALL BANDS)

Students must successfully complete the core requirement of both degrees. This includes the Psychology major in the Bachelor of Health Science and one of the following Bachelor of Business majors: Accounting, Advertising, Business Economics, Commercial Law, eBusiness, Finance, Information Technology, International Business, Management, Marketing, Tourism.

BACHELOR OF HEALTH SCIENCE (HONOURS)

DURATION:	1 YEAR
SEMESTER INTAKE:	FEBRUARY/JULY
IELTS:	6.5

This degree is a one-year honours programme that can provide top students accelerated entry into masters or doctoral study, dependent on successful completion of an undergraduate Health degree. Assessment is by coursework and a dissertation.

A HEALTH CAREER THROUGH A BACHELOR OF APPLIED SCIENCE OR BACHELOR OF MEDICAL LABORATORY SCIENCE

Some of AUT's health programmes share common ground with other courses in Applied Sciences.

POSTGRADUATE CERTIFICATE IN ADVANCED NURSING PRACTICE

DURATION:	6 MONTHS
SEMESTER INTAKE:	FEBRUARY/JULY
IELTS:	6.5

This programme provides the foundation education and development for advanced nursing practice.

POSTGRADUATE CERTIFICATE IN HEALTH SCIENCE

DURATION:	1 YEAR
SEMESTER INTAKE:	FEBRUARY/JULY
IELTS:	6.5

This postgraduate certificate is offered in Acupuncture, Advanced Psychotherapy Practice, Health Care Ethics, Health Management, Health Professional Education, Leadership in Health Practice, Māori Health, Mental Health, Midwifery, Occupational Practice, Psychotherapy, Rehabilitation, Sport & Exercise.

POSTGRADUATE DIPLOMA IN HEALTH SCIENCE

DURATION:	1 YEAR
SEMESTER INTAKE:	FEBRUARY
IELTS:	6.5

This diploma is offered in Acupuncture, Advanced Nursing Practice, Advanced Physiotherapy Practice, Health Care Ethics, Health Management, Health Professional Education, Leadership in Health Practice, Māori Health, Mental Health, Midwifery, Musculoskeletal Physiotherapy, Occupational Practice, Psychotherapy, Rehabilitation and Sport and Exercise.

MASTER OF HEALTH SCIENCE

DURATION:	2 YEARS
SEMESTER INTAKE:	FEBRUARY/JULY
IELTS:	6.5

This masters programme is made up of core and specialist papers and a thesis or dissertation. It can be completed in three ways:

- With no endorsement/subject area
- With a total research focus
- Within the following subject areas – Advanced Nursing Practice, Māori Health, Mental Health, Midwifery, Occupational Practice, Psychology, Physiotherapy, Psychotherapy, Rehabilitation, Sport and Exercise.

POSTGRADUATE DIPLOMA IN COUNSELLING PSYCHOLOGY

DURATION:	1 YEAR
SEMESTER INTAKE:	FEBRUARY/JULY
IELTS:	6.5

Admission requirements for this programme are a Masters of Health Science in Psychology or a relevant masters degree in psychology with the addition of the following papers: Advanced Psychological Assessment and Diagnosis, Advanced Psychological Intervention and Supervised Practicum or a relevant degree in psychology and papers equivalent to those listed above.

HEALTH – CONTINUED

MASTER OF HEALTH PRACTICE

DURATION: 1 YEAR
SEMESTER INTAKE: FEBRUARY/JULY
IELTS: 6.5

Admission requirements for this degree are a relevant bachelors degree and completion of three years' professional experience. It is available in the following subject areas: Acupuncture, Advanced Nursing Practice, Māori Health, Mental Health, Midwifery, Musculoskeletal Physiotherapy, Occupational Practice, Psychotherapy Practice, Rehabilitation, Sport and Exercise.

MASTER OF PHILOSOPHY

DURATION: 1 YEAR
SEMESTER INTAKE: APPLICATIONS ARE RECEIVED THROUGHOUT THE YEAR
IELTS: 6.5 (7.0 IN WRITING, NO BAND LOWER THAN 6.0 IN ALL OTHER BANDS)

This degree is a research masters degree and involves no coursework. Applicants are assessed by faculty postgraduate committees. Students need one of the following:

- A four-year bachelors degree
- A bachelors honours degree with at least a second-class pass
- A three-year degree plus a postgraduate diploma
- A bachelors degree, plus three years' experience relevant to the programme.

DOCTOR OF PHILOSOPHY

This degree consists of a thesis.

DOCTOR OF HEALTH SCIENCE

This degree is comprised of course work (120 points) and a thesis of (240) points. Applicants must have at least five years' professional experience in the field to which their research relates.

Some of AUT's health programmes share common ground with other courses in Applied Sciences.

MURTAZA ALI

KASHMIR, INDIA BHsc (NURSING)

Most of my cousins and uncles have studied abroad so I had a great interest in also doing this. My interest lay in the medical field and as I have an uncle who is a surgeon in Auckland I started doing research on Australia & NZ. Then I met and talked with the marketing manager for AUT in Delhi and knew AUT would be a good choice. I completed a one-year Certificate in Health Care and after graduating from that with good grades have moved into my nursing degree. Long term I have an interest in cardiology.

Living in the student village on campus with a mix of NZ and international students is very convenient as I can walk to class and have great access to the library. AUT is a wonderful university and a big part of it is that the staff are so helpful.

I have lived and studied in Kashmir which is a beautiful part off the world with mountains and waterfalls and now I also find Auckland city another beautiful place to be. All of my interaction with the people has been very positive although sometimes I find the road system and public transport a challenge! I plan on travelling around the country and joining a cricket club so I can meet more people.



ENGINEERING AND MATHEMATICAL SCIENCES

faculty of design and creative technologies

The School of Engineering offers programmes that allow students with an interest in the field to start at a level that suits their entry skills and advance as far as their interest and ability allows. The School's website can be found at www.autforengineering.info

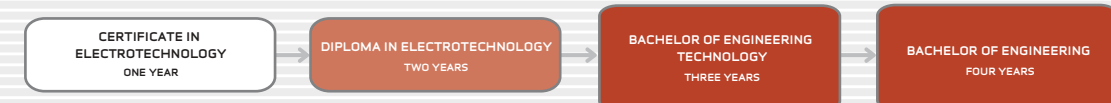
The School has many areas of research, some of which are listed below.

Structural Vibrations, Flow-Induced Vibrations, Biomechanics, Smart Polymers, Automatic Control Systems, Mechanical Design, Stress Analysis, Materials and Manufacturing Processes, Mechanical Fault Diagnostics, Thermofluid Systems, Air Conditioning, Modelling and Simulation of Dynamic Systems, Signal Processing, Communications and Computer Systems Engineering, Lighting and Illumination.

MECHANICAL AND PRODUCTION ENGINEERING STUDY PATHWAY



ELECTRICAL AND ELECTRONIC ENGINEERING STUDY PATHWAY



MAINTENANCE AND RELIABILITY STUDY PATHWAY



PLEASE NOTE: 1. Completion of one programme does not guarantee entry to a higher-level programme. 2. Students are encouraged to apply for the programme for which they are best qualified and are not necessarily required to enrol in the programme that appears at the start of the above diagram. 3. Some programmes in the above study pathways diagram may be prerequisites to – and not credit towards – higher level programmes.

CERTIFICATE IN ELECTROTECHNOLOGY

DURATION: 1 OR 2 YEARS
SEMESTER INTAKE: FEBRUARY
IELTS: 6.0 (NO BAND LESS THAN 5.0)

The first year provides foundation in electrical and electronics theory and practical experience with devices and systems. The second year offers options in either Electronics and Telecommunications or Electrical Engineering.

Credit may be carried into the Diploma in Electrotechnology.

CERTIFICATE IN ENGINEERING TECHNOLOGY

DURATION: 1 YEAR
SEMESTER INTAKE: FEBRUARY
IELTS: 5.5 (NO BAND LESS THAN 5.0)

This is a practical programme teaching students to become competent in machining, assembly, computing and welding. Key skills are mechanics, computers (including

CAD software), electronics, knowledge of basic maths and science, current equipment and methods. There are options to specialise in mechanical, product design or maintenance.

Graduate students can proceed to Diploma in Engineering (specialty), and the National Diploma in Engineering.

DIPLOMA IN ELECTROTECHNOLOGY

DURATION: 2 YEARS
SEMESTER INTAKE: FEBRUARY
IELTS: 6.0 (NO BAND LESS THAN 5.0)

This is designed to provide training in advanced engineering technologies. The course begins with a sound base in theory, practical and skills elements. Students may then choose from a wide selection of subjects within five specialist areas. All graduates will have analytical and design skills, the ability to find and evaluate data and communicate ideas.

DIPLOMA IN ENGINEERING (SPECIALTY)

DURATION: 2 YEARS
SEMESTER INTAKE: FEBRUARY
IELTS: 6.0 (NO BAND LESS THAN 5.0)

This is a practical qualification. After their first year students may choose to specialise in either Mechanical or Production Engineering. Skills learnt are technical drawing skills including CAD, health and safety regulations, manufacturing procedures and ethics and ethical practice.

ENGINEERING AND MATHEMATICAL SCIENCES – CONTINUED

DIPLOMA IN MAINTENANCE AND RELIABILITY ENGINEERING

DURATION: 1 YEAR
SEMESTER INTAKE: FEBRUARY
IELTS: 6.0 (NO BAND LESS THAN 5.0)

Students need to complete the Certificate in Engineering Technology (Speciality) to enter this programme which equips students with advanced skills and knowledge about maintenance and reliability concepts and practices, including predictive maintenance tools such as vibration monitoring and analysis.

Diploma graduates may advance to the Bachelor of Engineering Technology or the Bachelor of Engineering.

BACHELOR OF ENGINEERING TECHNOLOGY – COMPUTER SYSTEMS ENGINEERING MAJOR

DURATION: 3 YEARS
SEMESTER INTAKE: FEBRUARY
IELTS: 6.5 (NO BAND LOWER THAN 6.0)

There are four pathways within the major of this degree:

- **Digital Systems:** Microelectronic devices and systems as they are used in commercial, industrial and domestic systems and appliances
- **Networks:** Design, implementation, remediation and security of network devices and systems
- **Engineering Computing:** Applies the capabilities of computer-aided design and analysis, software, networks and modelling to engineering systems. Progression into a professional engineering degree or postgraduate work is also possible.

BACHELOR OF ENGINEERING TECHNOLOGY – MECHANICAL

DURATION: 3 YEARS
SEMESTER INTAKE: FEBRUARY
IELTS: 6.5 (NO BAND LOWER THAN 6.0)

This degree is designed to train students as engineering technologists in either Mechanical Design, Production Engineering or Maintenance Engineering. The programme covers computer systems and applications including CAD and CAM, production operations management, problem solving and use of materials. Students undertake a research or industry-based project in year three.

Graduates can progress to the professional engineering degree.

BACHELOR OF ENGINEERING – ELECTRICAL AND ELECTRONIC ENGINEERING MAJOR

DURATION: 4 YEARS
SEMESTER INTAKE: FEBRUARY
IELTS: 6.5 (NO BAND LESS THAN 6.0)

This major includes the electrical-related disciplines of electronics, telecommunications, instrumentation, control, supply, distribution and utilization of electricity, computer systems, networks and software engineering. These disciplines are supported by studies of the theory of electromagnetism, circuits and signals together with mathematical methods fundamental to engineering. In the final year students are able to specialize in an elective and carry out a project in an industrial environment.

BACHELOR OF ENGINEERING – MECHANICAL

DURATION: 4 YEARS
SEMESTER INTAKE: FEBRUARY
IELTS: 6.5 (NO BAND LOWER THAN 6.0)

This degree offers specialities in manufacturing management and automation & control systems. Students become familiar with a wide range of engineering theory and practice including ethics, environmental considerations, risk analysis, industrial computer systems, production management, operations management techniques and design methodology. A range of projects ends in a six-month industrial project helping a local company or consultancy to solve an engineering or organisational problem.

BACHELOR OF ENGINEERING – MAINTENANCE AND RELIABILITY

DURATION: 4 YEARS
SEMESTER INTAKE: FEBRUARY
IELTS: 6.5 (NO BAND LOWER THAN 6.0)

Students will gain a strong theoretical background in this key engineering specialisation. Skills and abilities are developed to enable graduates to solve maintenance and reliability problems with up-to-date technology.

POSTGRADUATE DIPLOMA IN ENGINEERING (RESEARCH)

DURATION: 1 YEAR
SEMESTER INTAKE: FEBRUARY
IELTS: 6.5

Students can undertake research within the department or conduct research in collaboration with industry.

MASTER OF ENGINEERING STUDIES

DURATION: 1 YEAR
SEMESTER INTAKE: FEBRUARY
IELTS: 6.5

This degree is taught on coursework material. There is no research component. Graduates who achieve high grades may be invited to continue into the Master of Engineering research year.

MASTERS OF ENGINEERING

DURATION: 2 YEARS
SEMESTER INTAKE: FEBRUARY
IELTS: 6.5

The first year of this degree is papers and the second year research and thesis. Industry-based research is encouraged.

DOCTOR OF PHILOSOPHY

DURATION: 2 YEARS
SEMESTER INTAKE: FEBRUARY
IELTS: 7.0 (7.0 IN WRITING)

This is available for students with an advanced degree in an engineering discipline to carry out an extensive research project. Study may be in the School of Engineering or in association with an industry partner.

MATHEMATICS

BACHELOR OF APPLIED SCIENCE – APPLIED MATHEMATICS

DURATION: 3 YEARS
SEMESTER INTAKE: FEBRUARY/JULY
IELTS: 6.0

This degree will give students knowledge of the use of mathematics in industry and applied science. Key skills are knowledge of maths, statistics, research methods, designing surveys, analysing data and computer database programmes. The degree prepares students for a wide range of careers as applied mathematicians and statisticians or in operations research, mathematical modelling and forecasting.

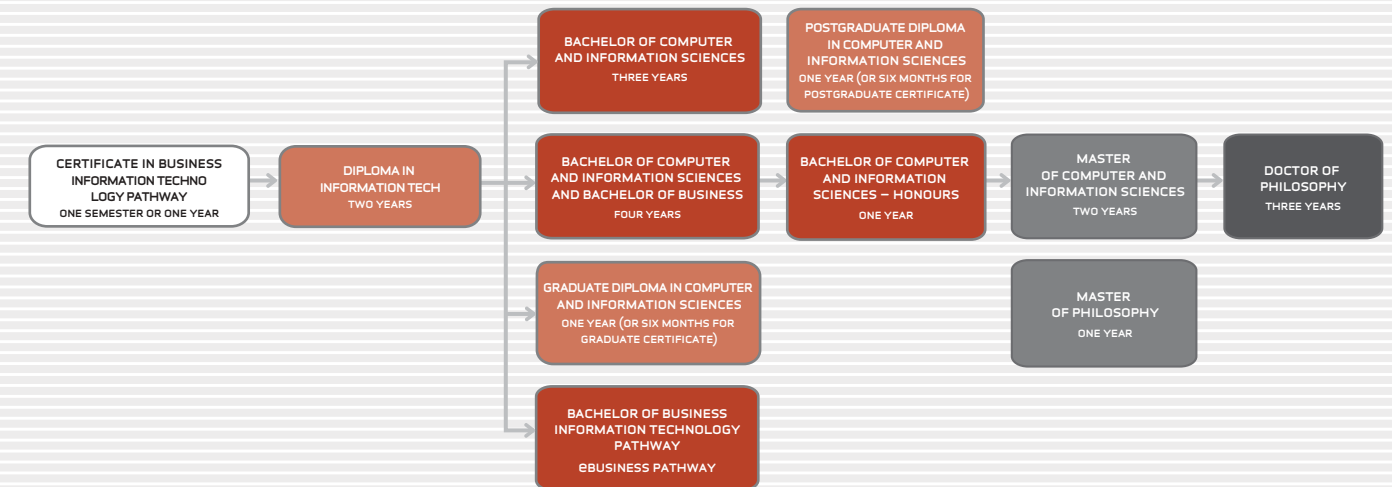
COMPUTER & INFORMATION SCIENCES

faculty of design and creative technologies

Research and curriculum in the School of Computer and Information Sciences form a unique blend of Computer Science and Information Systems. The School also has a high-profile advisory committee from a vast array of technology companies and sectors to ensure student learning is directly related to current and future industry needs. The School has four internationally prominent research groups:

- Knowledge Engineering and Discovery Research Institute (KEDRI) – bioinformatics, neuro-computing and brain study.
- Institute of Information Technology Research (IITR) – robotics, language.
- Software Engineering Research Lab (SERL) – advanced communications techniques, intelligent agents for information retrieval, data mining and geospatial referenced data.
- Centre for Research on Information Systems Management (CRISM) – e-business, the management of information systems, usability research and network & security.

COMPUTER AND INFORMATION SCIENCES STUDY PATHWAY



PLEASE NOTE: 1. Completion of one programme does not guarantee entry to a higher-level programme. 2. Students are encouraged to apply for the programme for which they are best qualified and are not necessarily required to enrol in the programme that appears at the start of the above diagram. 3. Some programmes in the above study pathways diagram may be prerequisites to – and not credit towards – higher level programmes.

CERTIFICATE IN BUSINESS – IT PATHWAY

DURATION: 1 YEAR
SEMESTER INTAKE: FEBRUARY/JULY
IELTS: 5.5

This is an entry-level programme in computing offering an introduction to the core business areas of economics, management, accounting and law. It prepares students for higher level study and pathways into information technology programmes.

DIPLOMA IN INFORMATION TECHNOLOGY

DURATION: 2 YEARS
SEMESTER INTAKE: FEBRUARY/JULY
IELTS: 6.0 (NO BAND LOWER THAN 5.5)

This diploma is relevant to students interested in joining the IT industry in a computing and networking support role. It focuses on IT technical support and ends in a mini-project in the final semester in the areas of network installation, small/medium web site creation/maintenance, office automation, integration or general work experience. It also provides pathways to BCIS degree.

BACHELOR OF COMPUTER AND INFORMATION SCIENCES

DURATION: 3 YEARS
SEMESTER INTAKE: FEBRUARY/JULY
IELTS: 6.5 (NO BAND LOWER THAN 6.0)

This degree is grounded in computer sciences, providing a sound technical understanding with the ability to plan, develop and apply the latest technologies and tools to solving computer problems. Areas of specialisation are software development, net-centric computing and IT security.



SCHOOL OF BUSINESS AND SCHOOL OF ART AND DESIGN

COMPUTER AND INFORMATION SCIENCES – CONTINUED

BACHELOR OF COMPUTER AND INFORMATION SCIENCES AND BACHELOR OF BUSINESS CONJOINT

DURATION: 3 YEARS
SEMESTER INTAKE: FEBRUARY/JULY
IELTS: 6.0 (IN ALL BANDS)

This degree programme provides a broader base of skills and knowledge. Students can choose majors from both programmes, leading to either a technical computing career pathway or a business career.

BACHELOR OF BUSINESS – IT AND EBUSINESS MAJORS

DURATION: 3 YEARS
SEMESTER INTAKE: FEBRUARY/JULY
IELTS: 6.0 (WITH WRITING/SPEAKING 6.0 AND OTHERS NO LOWER THAN 5.5)

The Bachelor of Business provides a broad business education and the eBusiness major focuses on understanding and practical use of Internet-based information technology concepts.

The IT major gives an appreciation of business and technical issues. Students develop the ability to solve business problems and add value to business through the application, implementation, use and management of information technology. Students gain skills with new innovations that can be used both in business and creatively.

GRADUATE DIPLOMA IN COMPUTER AND INFORMATION SCIENCES AND GRADUATE CERTIFICATE IN COMPUTER AND INFORMATION SCIENCES

DURATION: 1 YEAR OR 6 MONTHS
SEMESTER INTAKE: FEBRUARY/JULY
IELTS: 6.0 (IN ALL BANDS)

This diploma is designed for students seeking new or better professional roles in computer and information sciences. Graduates will be able to analyse, design and develop technical solutions. This programme also provides an introduction to information technology for students from other disciplines.

The programme comprises papers from the Bachelor of Computer Sciences and provides a foundation for study for the Master Computing and Information Sciences.

BACHELOR OF COMPUTER AND INFORMATION SCIENCES WITH HONOURS

DURATION: 1 YEAR
SEMESTER INTAKE: FEBRUARY/JULY
IELTS: 6.5 (WITH WRITING/READING NO LOWER THAN 6.0)

This is a one-year programme building on the BCIS or an undergraduate degree in information technology or a related area. It provides a base leading to the Master of Computer and Information Sciences.

Through research and postgraduate coursework, students will enhance their analytical skills and gain advanced knowledge in computing, and increased employability.

MASTER IN COMPUTER AND INFORMATION SCIENCES

DURATION: 2 YEARS
SEMESTER INTAKE: FEBRUARY/JULY
IELTS: 6.5 (WITH WRITING/READING NO LOWER THAN 6.0)

This is a postgraduate degree incorporating the Postgraduate Certificate and Postgraduate Diploma in Computer and Information Sciences.

This programme is aimed at technology professionals wanting to update the depth and breadth of their knowledge in the latest technology trends. Students will advance their skills in a specialist field of information technology and computer and information sciences and carry out applied research.

MASTER OF PHILOSOPHY

DURATION: 1 YEAR
SEMESTER INTAKE: ANY TIME THROUGHOUT THE ACADEMIC YEAR
IELTS: 6.5 (WITH WRITING NO LOWER THAN 7.0)

This postgraduate degree is gained through research in any topic, including Computer and Information Sciences. Normally there is no coursework involved. Students choose a topic of research in a specific area.

The MPhil gives students the necessary skills and qualification to follow an academic or research career leading to a PhD. The school has extensive research capabilities in Information Systems, System Usability, Knowledge Engineering and Artificial Intelligence.

DOCTOR OF PHILOSOPHY

DURATION: 3 YEARS
SEMESTER INTAKE: FEBRUARY/JULY
IELTS: 7.0 (WITH WRITING NO LOWER THAN 7.0)

This is a research-only degree with no coursework. Successful candidates will make a significant contribution to contemporary issues in computing and information science research. The school has extensive research capabilities in Information Systems, System Usability, Knowledge Engineering and Artificial Intelligence.

ART AND DESIGN

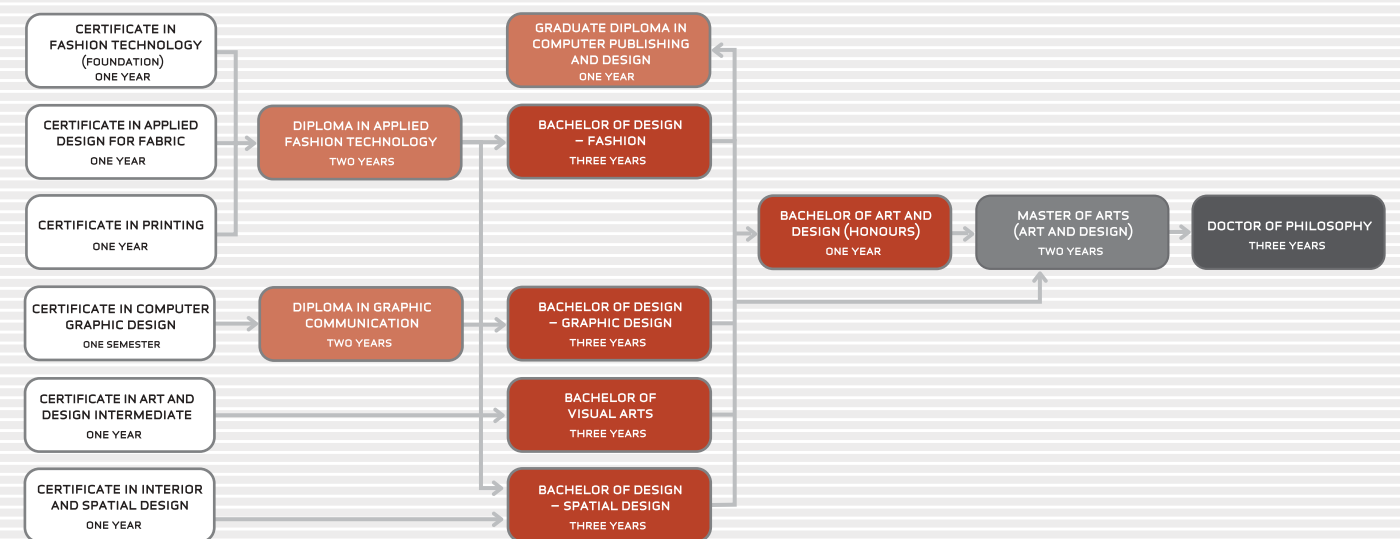
faculty of design and creative technologies

The School of Art and Design is one of New Zealand's largest providers of art and design education. Programmes balance originality, creativity and conceptual development with theoretical and professional studies.

The specialised areas covered include fashion, printing, graphic design, spatial design, visual arts, computer publishing and fabric printing. We have close links with industry and work with representatives to ensure that our qualifications are relevant and meet the needs of employers.

The School of Art and Design has a leading reputation for research in the field of visual arts, design, fashion, and critical theory.

ART AND DESIGN STUDY PATHWAY



PLEASE NOTE: 1. Completion of one programme does not guarantee entry to a higher-level programme. 2. Students are encouraged to apply for the programme for which they are best qualified and are not necessarily required to enrol in the programme that appears at the start of the above diagram. 3. Some programmes in the above study pathways diagram may be prerequisites to – and not credit towards – higher level programmes.

CERTIFICATE IN ART AND DESIGN INTERMEDIATE

DURATION: 1 YEAR
SEMESTER INTAKE: FEBRUARY
IELTS: 5.5 (WITH NO BAND LOWER THAN 5.0)

This provides a sound basis for further undergraduate studies and helps students to decide which area of visual arts or design they wish to specialise in. The programme includes creating a portfolio, solving design problems and formulating design ideas.

CERTIFICATE IN APPLIED DESIGN FOR FABRIC

DURATION: 1 YEAR
SEMESTER INTAKE: FEBRUARY
IELTS: 5.5 (WITH NO BAND LOWER THAN 5.0)

This develops imagination and creativity in the area of applied fabric design and gives students the knowledge, skills and processes to reproduce original designs on fabric using screen-printing and other surface decoration techniques.

CERTIFICATE IN COMPUTER GRAPHIC DESIGN

DURATION: 1 SEMESTER
SEMESTER INTAKE: FEBRUARY/JULY
IELTS: 5.5 (WITH NO BAND LOWER THAN 5.0)

This provides a practical understanding of computer technologies and current software packages (using the Apple Macintosh) for graphic design, page layout design, text and typography. Publishing and printing are also covered.

CERTIFICATE IN FASHION TECHNOLOGY (FOUNDATION)

DURATION: 1 YEAR
SEMESTER INTAKE: FEBRUARY
IELTS: 5.5 (WITH NO BAND LOWER THAN 5.0)

This develops students' understanding of the many requirements of the fashion industry. Theoretical and practical study gives students the skills and knowledge vital to fashion technology. This programme is a good foundation for further study.

ART AND DESIGN – CONTINUED

CERTIFICATE IN INTERIOR AND SPATIAL DESIGN

DURATION:	1 YEAR
SEMESTER INTAKE:	FEBRUARY
IELTS:	5.5 (WITH NO BAND LOWER THAN 5.0)

This develops knowledge and understanding associated with Interior and Spatial Design and provides introductory level studies in a comprehensive, industry-focused programme. Students will prepare and present work focused on studio design. Technical knowledge is backed up by theory and professional practice.

CERTIFICATE IN PRINTING (SCREEN PRINTING)

DURATION:	1 YEAR
SEMESTER INTAKE:	FEBRUARY
IELTS:	5.5 (WITH NO BAND LOWER THAN 5.0)

This provides students with the screen printing skills for commercial environments. Students learn basic design techniques using PCs and various software packages. The course covers several methods of manual and photographic screen and stencil preparation, and a wide variety of printing techniques.

DIPLOMA IN APPLIED FASHION TECHNOLOGY

DURATION:	2 YEARS
SEMESTER INTAKE:	FEBRUARY
IELTS:	5.5 (WITH NO BAND LOWER THAN 5.0)

This provides training in fashion and design technology to meet industry requirements in business, design and manufacture. Students develop new skills and new ways of thinking in the field of applied fashion technology. The course covers patternmaking, garment construction and design as core subjects. Students can choose to specialise from the second year.

DIPLOMA IN GRAPHIC COMMUNICATION

DURATION:	2 YEARS
SEMESTER INTAKE:	FEBRUARY/JULY
IELTS:	5.5 (WITH NO BAND LOWER THAN 5.0)

This offers hands-on study in the fields of graphic design, print production, digital imaging, design and production including web design and studio practice. Students learn practical skills in a wide range of areas including web design, print design, graphic design, communication skills, digital design and printing.

BACHELOR OF DESIGN – FASHION

DURATION:	3 YEARS
SEMESTER INTAKE:	FEBRUARY
IELTS:	6.5 (WITH NO BAND LOWER THAN 6.0)

This degree encourages students to have a professional attitude to their work from idea and design through to production. It emphasises both the creative and technical aspects of fashion work. Core papers are studied in the first two years. In the third year students specialise in garment design and production in either fashion design, costume design or knitwear design.

BACHELOR OF DESIGN – GRAPHIC DESIGN

DURATION:	3 YEARS
SEMESTER INTAKE:	FEBRUARY
IELTS:	6.5 (WITH NO BAND LOWER THAN 6.0)

This degree provides a foundation in the thinking and skills relating to graphic design, illustration and photography. Students are taught to think creatively, have a flexible approach and communicate ideas effectively. There are options to specialise in illustration, digital design, advertising or photography.

BACHELOR OF DESIGN – SPATIAL DESIGN

DURATION:	3 YEARS
SEMESTER INTAKE:	FEBRUARY
IELTS:	6.5 (WITH NO BAND LOWER THAN 6.0)

This degree provides a solid foundation in the theory and practical skills relating to spatial design. Students explore interior design, design for performance or furniture design. Key skills learnt are history of spatial design, a critical eye, flexible and adaptable problem solving, effective communication of ideas.

BACHELOR OF VISUAL ARTS

DURATION:	3 YEARS
SEMESTER INTAKE:	FEBRUARY
IELTS:	6.5 (WITH NO BAND LOWER THAN 6.0)

This degree develops practical skills and the ability to work with concepts and focuses on nurturing each student's artistic interests, developing ideas and working with visual language. Art theory and history are covered, as are analysis and critical evaluation of art.

Students may specialise in painting, photography, printmaking or sculpture.

BACHELOR OF ART AND DESIGN (HONOURS)

DURATION:	4 YEARS
SEMESTER INTAKE:	FEBRUARY
IELTS:	6.5 (WITH NO BAND LOWER THAN 6.0)

This degree offers an intensive programme of specialisation in a chosen field and involves a year of research in specialist areas of design and visual arts, or use of a combination of areas to communicate one idea. Assessment is by dissertation and a studio project.

GRADUATE DIPLOMA IN COMPUTER PUBLISHING AND DESIGN

DURATION:	1 YEAR
SEMESTER INTAKE:	JULY
IELTS:	6.5 (WITH NO BAND LOWER THAN 6.0)

This diploma explores electronic publishing in depth and focuses on applied and practical skills giving students the chance to expand their approaches to research and creativity. Awareness of innovation and changing trends is important.

MASTER OF ARTS (ART AND DESIGN)

DURATION:	2 YEARS
SEMESTER INTAKE:	FEBRUARY/JULY
IELTS:	6.5 (WITH NO BAND LOWER THAN 6.0)

This is a flexible research degree that enables students to explore and develop a body of work at an advanced level. Coursework papers are followed by thesis research and presentation in the second year. The thesis can be presented in a written or visual form.

DOCTOR OF PHILOSOPHY

DURATION:	3 YEARS
SEMESTER INTAKE:	FEBRUARY
IELTS:	7.0 (IN WRITING)

This involves in-depth original research resulting in a doctoral thesis. Applicants are invited to discuss their study plans with our postgraduate office.

MOON (MENG-HO) LEE



TAIWAN

MASTERS IN ART AND DESIGN

I completed a Bachelor of Marketing in Taiwan but because I had a passion for art & design I was interested in pursuing this dream further. After visiting my sister, who is studying a Bachelor Degree in Art & Design at AUT, I made the decision to apply for the Masters programme. Initially I thought Auckland was quiet but it is a cross-cultural city that is convenient and safe. There is a great fusion of food and excellent art galleries and exhibits.

One month into my degree I was conscripted into the military in Taiwan but as soon as I had completed my service I returned to AUT.

Within the degree I have found that my responsibility has been challenged as we do self-research (with guidance from my teachers) and this system has led me to being more creative. The 3D workshop and technicians and the fantastic gallery space in the new Art & Design building make being a student at AUT an enjoyable experience.

My ambitions are to do comic animation for the Taiwanese/NZ market plus story boarding for film-making. A fellow student and I have received funding from Creative NZ to do a short cartoon so stay tuned...

CLAES DICKENS

STOCKHOLM, SWEDEN

GRADUATE DIPLOMA IN ADVERTISING CREATIVITY

My first introduction to New Zealand was twenty years ago when my sister came back home with stories of her travels there. Many years after that I had a New Zealander staying with me so again it created an interest in discovering it for myself.

After I completed my two-year programme in Art Direction at the prestigious Berghs School of Communication in Stockholm I started work in the industry. Then came a time when I wanted to extend my portfolio and possibly combine some travel. Auckland University of Technology looked like a good match offering me a Graduate Diploma in Advertising Creativity and it was located in New Zealand!



I am enjoying the down-to-earth quality of Auckland and have found it very easy to become a local. Squash and golf are two sports I enjoy so I have easy access to be able to play them. A trip to Queenstown was the prize I was awarded for winning the best small advertisement for the New Zealand Television Guide. What a great experience as I got to indulge in a lot of NZ extreme sports like bungy jumping.

Auckland University of Technology has been a positive experience and I feel I have reached my objective of improving my portfolio. In fact after graduation I will be looking for a position as an art director in New Zealand.

COMMUNICATION STUDIES

faculty of design and creative technologies

AUT's Communication Studies programmes prepare you for careers in print, broadcast and new media. Designed in consultation with media and communications professionals, they give you a thorough grounding in theory, analysis and techniques.

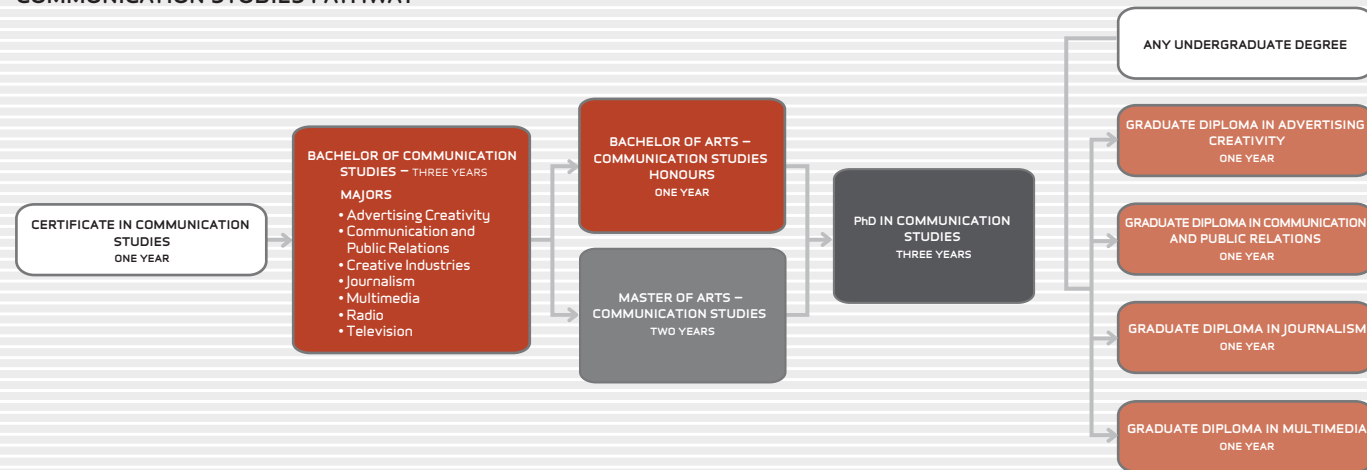
Our programmes put students in real-world working situations. The University has real working environments for students including:

- A television studio complex
- On-air FM radio station
- Multimedia laboratories
- Computer laboratories
- Radio workstations and a radio production room
- Public Relations laboratory
- Newsroom
- Advertising creativity studio

Students also have access to all of AUT's other facilities.

- www.adcreative.co.nz
- www.creativeindustries.co.nz
- www.journalism.co.nz
- www.multimedia.co.nz
- www.publicrelations.co.nz
- www.radio.co.nz
- www.television.co.nz

COMMUNICATION STUDIES PATHWAY



PLEASE NOTE: 1. Completion of one programme does not guarantee entry to a higher-level programme. 2. Students are encouraged to apply for the programme for which they are best qualified and are not necessarily required to enrol in the programme that appears at the start of the above diagram. 3. Some programmes in the above study pathways diagram may be prerequisites to – and not credit towards – higher level programmes.

CERTIFICATE IN COMMUNICATION STUDIES

DURATION:	1 YEAR
SEMESTER INTAKE:	FEBRUARY
IELTS:	5.5 (WITH NO BAND LOWER THAN 5.0)

This introduces students to the theory, issues and practice of communication and prepares them for the Bachelor of Communication Studies degree. It gives students the academic knowledge and skills to begin to understand some of the social, political and cultural foundations of New Zealand society and the media's role in that society.

BACHELOR OF COMMUNICATION STUDIES

DURATION:	3 YEARS
SEMESTER INTAKE:	FEBRUARY
IELTS:	6.5 (WITH NO BAND LOWER THAN 6.0)

These programmes give theoretical and practical experience over a wide range of communication fields. Students may specialise in one major area in year three, or study a major and a minor. Graduates are fully equipped to enter their chosen media profession or continue to higher study.

ADVERTISING CREATIVITY MAJOR

This consists mainly of practical papers. Core papers include copywriting, creative strategy, creative principles and practice, and campaigns. There are workshops with the advertising industry and guest speakers from leading advertising agencies. The programme has the support of CAANZ (Communication Agencies Association of New Zealand).

COMMUNICATION AND PUBLIC RELATIONS MAJOR

Core papers cover corporate communication, human resources, communication strategy

and integrated marketing communication. Students work with industry mentors on a live communication project. The programme ends with practical project management papers.

CREATIVE INDUSTRIES MAJOR

This focuses on issues of cultural policy, organisational communication, intellectual property and work relationships in the creative sectors. The course extends students' knowledge of media production into the area of management of creative personnel and creative projects.

BACHELOR OF COMMUNICATION STUDIES – JOURNALISM MAJOR

This is approved and accredited by the New Zealand Journalists Training Organisation. Graduates qualify for the National Diploma in Journalism. The course covers newspaper editing and design, writing specialisations, bi-cultural reporting, media law, ethics and public affairs reporting including shorthand. Options offered are broadcast journalism, magazine journalism, photo journalism, new media journalism, editing and design, and news production.

BACHELOR OF COMMUNICATION STUDIES – MULTIMEDIA MAJOR

Multimedia is a digital combination of text, still images, sound, animation and video. Students will gain a mixture of technical skills and improve their creativity. They will understand what great digital media is, and how to work within the limits of budget and copyright.

BACHELOR OF COMMUNICATION STUDIES – RADIO MAJOR

This places equal emphasis on creativity and theory. It teaches performance skills, radio station operations and management and the critical thinking and understanding required. The course covers broadcast journalism, the music industry and related technology. Students run their own FM radio station and have access to up-to-date technical facilities.

BACHELOR OF COMMUNICATION STUDIES – TELEVISION MAJOR

Students research, write, direct, production manage and edit their own work and assist other students with presentation, camera operation and sound recording. Making short corporate or community videos for clients and undertaking a television studio production develops practical production skills. The course also covers television writing in the areas of documentary and drama scripts.

BACHELOR OF ARTS, HONOURS

DURATION:	1 YEAR
SEMESTER INTAKE:	FEBRUARY
IELTS:	6.5 (WITH WRITING NO LOWER THAN 7.0 AND ALL OTHER BANDS NO LOWER THAN 6.0)

This degree offers students the choice of either an applied or an academic pathway in the field of communication studies. The practical options within the Applied Media Workshop include investigative journalism, screenwriting, public relations and digital media.

GRADUATE DIPLOMA IN ADVERTISING CREATIVITY

DURATION:	1 YEAR
SEMESTER INTAKE:	FEBRUARY
SEMESTER INTAKE:	6.5 (WITH WRITING NO LOWER THAN 7.0 AND ALL OTHER BANDS NO LOWER THAN 6.0)

A key part of the programme is putting together a portfolio of work as a copywriter or art director. This will help in finding employment with an advertising agency's creative department or other marketing communications company. The diploma has the support of CAANZ (Communication Agencies Association of New Zealand).

GRADUATE DIPLOMA IN COMMUNICATION & PUBLIC RELATIONS

DURATION:	1 YEAR
SEMESTER INTAKE:	FEBRUARY
IELTS:	6.5 (WITH WRITING NO LOWER THAN 7.0 AND ALL OTHER BANDS NO LOWER THAN 6.0)

This diploma is based on the Bachelor of Communication Studies, Communication Management/PR curriculum. Key skills acquired are: leadership of communication strategy; planning and implementation of campaigns; organisation and delivery of written and spoken communication; computer skills for visual, print and web-based media; news media writing and report composition; person-to-person and group dynamics.

GRADUATE DIPLOMA IN JOURNALISM

DURATION:	4 YEARS
SEMESTER INTAKE:	FEBRUARY
IELTS:	6.5 (WITH WRITING NO LOWER THAN 7.0 AND ALL OTHER BANDS NO LOWER THAN 6.0)

This diploma is approved and accredited by the New Zealand Journalist Training Organisation. Graduates also qualify for the National Diploma in Journalism. Key skills learnt are interviewing and information gathering, news writing, shorthand, and media theory. A range of options are offered in the first and second semesters.

GRADUATE DIPLOMA IN MULTIMEDIA

DURATION:	4 YEARS
SEMESTER INTAKE:	FEBRUARY
IELTS:	6.5 (WITH WRITING NO LOWER THAN 7.0 AND ALL OTHER BANDS NO LOWER THAN 6.0)

Prior knowledge of multimedia is not necessarily required but applicants may be required to provide evidence of previous academic study and writing ability. Students gain knowledge and planning, and creative and technical skills in several of these fields: digital imaging, web media, interactive media, digital video, postproduction and animation.

MASTER OF ARTS – COMMUNICATION STUDIES

DURATION:	2 YEARS
SEMESTER INTAKE:	FEBRUARY
IELTS:	6.5 (WITH WRITING NO LOWER THAN 7.0 AND ALL OTHER BANDS NO LOWER THAN 6.0)

This is a postgraduate research degree offering practical options. These include investigative journalism, screenwriting, public relations and digital media. The research thesis can be of an applied nature, e.g. it may be a piece of journalism, a film screenplay, a public relations plan or other practical item.

DOCTOR OF PHILOSOPHY IN COMMUNICATION STUDIES

DURATION:	3 YEARS
SEMESTER INTAKE:	FEBRUARY
IELTS:	7.0

This is a thesis-based research degree granted on the basis of an original and substantial contribution to knowledge. The Faculty of Design & Creative Technologies encourages and supports innovative interdisciplinary research. The School of Communication Studies has supervising staff whose research interests cover a range of areas encompassing media, politics and ownership, journalism, human communication, new media and development, and discourse analysis.

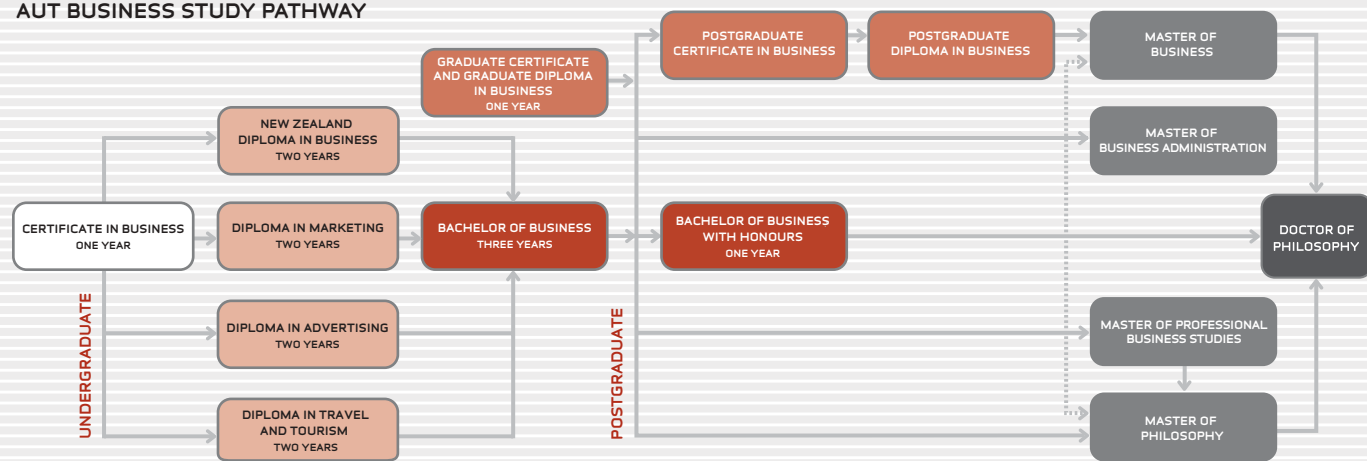
BUSINESS

faculty of business

AUT Faculty of Business is one of the largest business schools in New Zealand. Our focus is on preparing graduates for professional and personal success. All the programmes in the Faculty of Business have 'real world' approach with the emphasis on applied learning. The Faculty has one of the highest graduate employment rates in New Zealand – 92% of all our graduates are employed within six months.

Academic staff work closely with students, providing guidance and advice for their study and research and our close links with industry mean that coursework and research is relevant to professional practice.

AUT BUSINESS STUDY PATHWAY



PLEASE NOTE: 1. Completion of one programme does not guarantee entry to a higher-level programme. 2. Students are encouraged to apply for the programme for which they are best qualified and are not necessarily required to enrol in the programme that appears at the start of the above diagram. 3. Some programmes in the above study pathways diagram may be prerequisites to – and not credit towards – higher level programmes.

CERTIFICATE IN BUSINESS – LEVEL 2

DURATION:	1 SEMESTER
SEMESTER INTAKE:	FEBRUARY/JULY
IELTS:	5.0

This is an introductory business programme covering calculations, computing, English language and a knowledge of the business environment. It links with the Certificate in Business and enhances the ability to achieve at a higher level of education.

CERTIFICATE IN BUSINESS

DURATION:	1 YEAR
SEMESTER INTAKE:	FEBRUARY/JULY
IELTS:	5.5

This is a flexible one-year programme that introduces core business disciplines for preparation to higher level study at degree or diploma level. It also offers office technology, information technology and administration skills to enter the workforce.

NZ DIPLOMA IN BUSINESS

DURATION:	2 YEARS
SEMESTER INTAKE:	FEBRUARY/JULY
IELTS:	6.0 (WRITING 6.0)

A nationally recognised tertiary qualification that is a broad based. Students may elect to specialise in order to meet the national standards of professional qualifications such as the Institute of Chartered Accountants of New Zealand, the New Zealand Institute of Management and the Australasian Institute of Banking and Finance.

DIPLOMA IN MARKETING

DURATION:	2 YEARS
SEMESTER INTAKE:	FEBRUARY/JULY
IELTS:	6.0 (WRITING 6.0)

This provides key marketing skills which will enable students to assist any organisation in their business planning, research and analysis, plus understand their customers and market. Students can graduate with a double diploma

(Marketing and Advertising) or move into the Bachelor of Business.

DIPLOMA IN ADVERTISING

DURATION:	2 YEARS
SEMESTER INTAKE:	FEBRUARY/JULY
IELTS:	6.0 (WRITING 6.0)

Supported by the advertising industry, this is one of the few advertising courses in New Zealand. It covers core business disciplines as well as all aspects of the advertising process, including advertising agency structure and management, media planning and buying, the creative process, account management and strategic planning. Students can also graduate with a Diploma from the International Advertising Association.

BACHELOR OF BUSINESS

DURATION:	3 YEARS
SEMESTER INTAKE:	FEBRUARY/JULY
IELTS:	6.0 (NO BAND LESS THAN 5.5)

New Zealand's leading business degree develops a broad understanding of business through an interdisciplinary curriculum as well as the specialist skills needed for a professional career. There are 11 majors in the degree: Accounting, Advertising, Business Economics, Commercial Law, eBusiness, Finance, Information Technology, Int. Business, Management, Marketing and Tourism. Application of knowledge and skills within an organisation is undertaken in the workplace (Co-operative Education).

BACHELOR OF BUSINESS HONOURS

DURATION:	1 YEAR
SEMESTER INTAKE:	FEBRUARY/JULY
IELTS:	7.0

This postgraduate degree develops research and analytical skills and importantly gives recognition by future employers of outstanding academic achievement.

CONJOINT DEGREES

The conjoint programmes provide a broader base of skills, knowledge and career options than a single degree. Students study two degrees concurrently. It is designed for students of above-average academic records.

BACHELOR OF BUSINESS WITH BACHELOR OF APPLIED SCIENCE

DURATION:	4 YEARS
SEMESTER INTAKE:	FEBRUARY/JULY
IELTS:	6.5

MAJORS BBus: Accounting, Advertising, Business Economics, Commercial Law, eBusiness, Finance, Information Technology, Int. Business, Management, Marketing and Tourism. B.AppSci: Chemistry, Environmental Studies, Food Technology, Human Anatomy and Physiology, Microbiology, Applied Mathematics and Aquaculture.

BACHELOR OF BUSINESS WITH BACHELOR OF ARTS (APPLIED)

DURATION:	4 YEARS
SEMESTER INTAKE:	FEBRUARY/JULY
IELTS:	6.5

MAJORS BBus: Accounting, Advertising, Business Economics, Commercial Law, eBusiness, Finance, Information Technology, Int. Business, Management, Marketing and Tourism. BA(Applied): Chinese, English Language, Japanese, Psychology and Social Sciences.

BACHELOR OF BUSINESS WITH BACHELOR OF INTERNATIONAL HOSPITALITY MANAGEMENT

DURATION:	4 YEARS
SEMESTER INTAKE:	FEBRUARY/JULY
IELTS:	6.5

MAJORS BBus: Accounting, Advertising, Business Economics, Commercial Law, eBusiness, Finance, Information Technology, Int. Business, Management, Marketing and Tourism. BIHM (no majors) This is the only specialist Hospitality Management degree in the New Zealand University sector.

BACHELOR OF BUSINESS WITH BACHELOR OF HEALTHSCIENCE

DURATION:	4 YEARS
SEMESTER INTAKE:	FEBRUARY/JULY
IELTS:	6.5

MAJORS BBus: Accounting, Advertising, Business Economics, Commercial Law, eBusiness, Finance, Information Technology, Int. Business, Management, Marketing and Tourism. BHSc: Psychology

BACHELOR OF BUSINESS WITH BACHELOR OF SPORT AND RECREATION

DURATION:	4 YEARS
SEMESTER INTAKE:	FEBRUARY/JULY
IELTS:	6.5

MAJORS BBus: Accounting, Advertising, Business Economics, Commercial Law, eBusiness, Finance, Information Technology, Int. Business, Management, Marketing and Tourism. BSR: Four speciality areas are

available: Exercise Science, Sport and Recreation Management, Outdoor Education and Health Promotion.

BACHELOR OF COMPUTER AND INFORMATION SCIENCES AND BACHELOR OF BUSINESS

DURATION:	4 YEARS
SEMESTER INTAKE:	FEBRUARY/JULY
IELTS:	6.5

MAJORS BBus: Accounting, Advertising, Business Economics, Commercial Law, eBusiness, Finance, Information Technology, Int. Business, Management, Marketing and Tourism. BCIS: Software development, Net-Centric Computing, IT Security.

GRADUATE DIPLOMA IN BUSINESS

DURATION:	1 YEAR
SEMESTER INTAKE:	FEBRUARY/JULY
IELTS:	6.5 (NOT LESS THAN 6.0 IN ANY BAND)

The Graduate Diploma in Business is available for students with a business degree and professional experience who want to gain a qualification that allows entry into postgraduate programmes such as the Master of Business.

MASTER OF BUSINESS

DURATION:	2 YEARS
SEMESTER INTAKE:	FEBRUARY/JULY
IELTS:	7.0 (NOT LESS THAN 6.5 IN ANY BAND)

This is a postgraduate programme that allows for advanced professional knowledge in a specialist field of business. Students undertake applied research through a thesis or dissertation.

MASTER OF PROFESSIONAL BUSINESS STUDIES

DURATION:	1 YEAR
SEMESTER INTAKE:	FEBRUARY/JULY
IELTS:	7.0 (NOT LESS THAN 6.5 IN ANY BAND)

This coursework masters allows advanced professional knowledge in a specialist field of study. The MPBS builds on a relevant 3-year undergraduate degree and relevant professional experience (or 4 years of degree and postgraduate or honours study).

AS A GRADUATE I AM NOW BACK WORKING WITH THE NORWEGIAN PARLIAMENT AS AN ADVISOR AND HOPE TO LOOK AT A ROLE IN AN INTERNATIONAL NORWEGIAN ORGANISATION IN THE NEAR FUTURE – NOT NECESSARILY BASED IN NORWAY – WHEREVER IT MAY TAKE ME – **MAYBE NZ!**

BUSINESS – CONTINUED

MASTER OF BUSINESS ADMINISTRATION

DURATION: 18 MONTHS

SEMESTER INTAKE: JANUARY/MARCH/MAY/
JULY/AUGUST/OCTOBER

IELTS: 6.5

This is a multi-disciplinary postgraduate degree, which provides students with a set of models and techniques for all the core functions of management. It links theory and practice to develop students looking for advanced leadership and management knowledge and skills.

Classes involve interactive workshops and self-directed learning.

The course provides knowledge of accounting, business economics, finance, human resources, information technology, management, law, marketing, operations management and strategy.

CHRISTIAN HANEBOG

NESOYA, NORWAY

BACHELOR OF BUSINESS (DOUBLE MAJOR IN MANAGEMENT AND INTERNATIONAL BUSINESS)

I was working with the Norwegian Parliament as a political advisor (youngest member there) and decided I would like to study business at my parents' own businesses. After looking at some of the top schools in the United Kingdom I spoke with two friends studying in Auckland at different institutes and then joined a class at both and immediately liked the AUT environment as it had the more informal structure which is exactly what I was looking for. I responded better to the interactive versus receiving information in a large lecture theatre, plus the small classes also were less intimidating for someone with English as a second language. Focus on group work in the degree is very important – crucial to learning/ experience for the business world.

I have enjoyed living in Auckland as the standard of living is very good in comparison to Norway, especially the milder winters. Because of the different environment and being so far away from home there was no tendency to drift back to Norway regularly (as many do between UK and Norway) hence be less integrated into the local culture.

The ability to travel to Australia and the South Pacific while studying in NZ and the stopovers on the way home meant that I got to see a lot of the world every time I returned to Norway.

I managed to fastback my degree over 5 semesters – 5 papers each semester and summer school then did my cooperative in UAE in the Norwegian Embassy as an attaché giving business advise to Norwegian organisations based in UAE or wanting to export to UAE as I have an interest in cross-cultural issues.

As a graduate I am now back working with the Norwegian Parliament as an advisor and hope to look at a role in an international Norwegian organisation in the near future – not necessarily based in Norway – wherever it may take me – maybe NZ!



CHRISTIAN HANEBOG WON THREE AWARDS: 1 – THE OUTSTANDING GRADUATE MAJORING IN MANAGEMENT. 2 – THE OUTSTANDING GRADUATE MAJORING IN INTERNATIONAL BUSINESS. 3 – THE OVERALL TOP BBUS GRADUATE (THIS AWARD IS THE MOST PRESTIGIOUS AWARD FOR THE BACHELOR OF BUSINESS).



SHRIKANT TALNIKAR

MUMBAI, INDIA

MBA

I had been working in Mumbai as a mechanical engineer for ten years and made the decision to explore furthering my education in management. After consultation with an approved New Zealand educational consultant I made the decision to come to AUT. I was not disappointed as the University provided me with an excellent infrastructure with labs/libraries etc as well as a truly international education perspective.

I did some travelling in both islands in New Zealand and loved the countryside with all the adventure activities, met some lovely people and made some very good friends.

Now that I am back in India my company has given me an international business assignment which is exactly what I was hoping to progress to.

Thank you, AUT, for a great MBA!

LANGUAGES

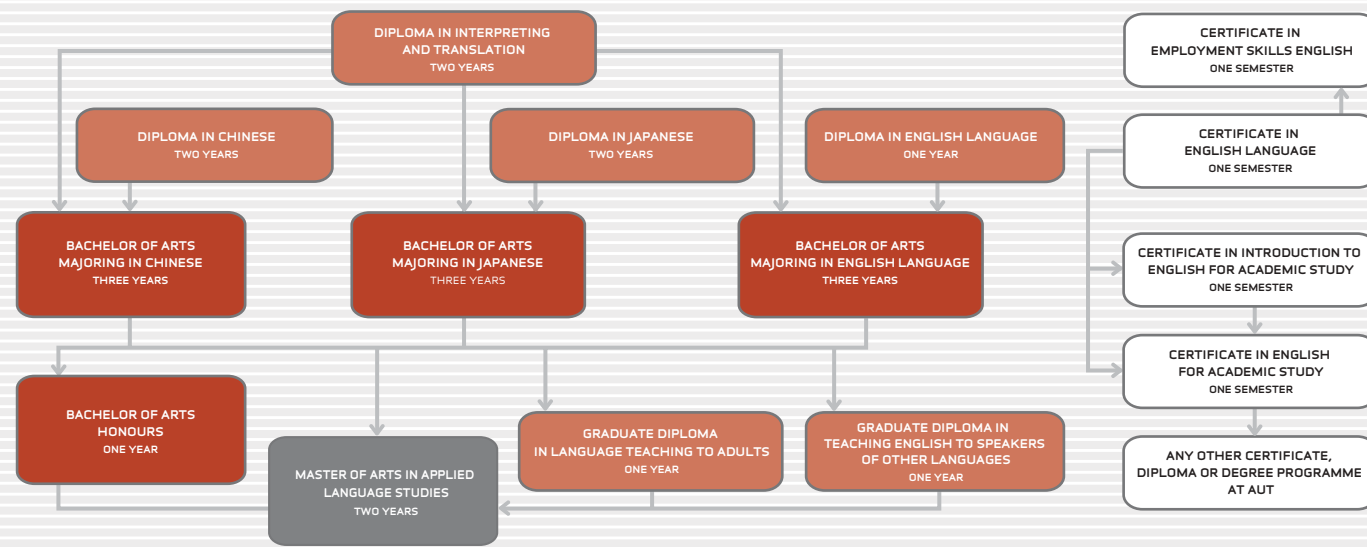
faculty of applied humanities

The School of Languages at AUT will develop your ability to communicate and give you a qualification you can use all around the world. With our small class sizes and well-equipped language and computer labs, AUT will bring learning to life.



WELLESLEY HALL OF RESIDENCE

LANGUAGES STUDY PATHWAY



PLEASE NOTE: 1. Completion of one programme does not guarantee entry to a higher-level programme. 2. Students are encouraged to apply for the programme for which they are best qualified and are not necessarily required to enrol in the programme that appears at the start of the above diagram. 3. Some programmes in the above study pathways diagram may be prerequisites to – and not credit towards – higher level programmes.

CERTIFICATE IN ENGLISH LANGUAGE

DURATION: 1 SEMESTER
SEMESTER INTAKE: FEBRUARY/JULY
IELTS: NA

This course is for students who have English as an additional language. It improves listening, speaking, reading and writing for university study, employment and everyday life. Students can enter and exit the programme at any level.

Students are eligible to continue study to various English language certificates, the Diploma in English Language or certificate programmes in other subjects.

CERTIFICATE IN INTRODUCTION TO ENGLISH FOR ACADEMIC STUDY

DURATION: 1 SEMESTER
SEMESTER INTAKE: FEBRUARY/JULY
IELTS: 4.5 (WITH NO BAND LOWER THAN 4.0)

This course is suitable for students for whom English is not their first language. It focuses on language skills to enable students to develop their academic English proficiency.

Graduates of the course may enter mainstream programmes of study at certificate level or the Certificate in English for Academic Study.

CERTIFICATE IN ENGLISH FOR ACADEMIC STUDY

DURATION: 1 SEMESTER
SEMESTER INTAKE: FEBRUARY/JULY
IELTS: 5.5 (WITH NO BAND LOWER THAN 5.0)

This course is suitable for students for whom English is not their first language. It develops academic English skills and strategies and includes a General Studies or Business Studies option.

Graduates could continue studies into the Diploma in English Language, Bachelor of Arts in English Language or other undergraduate programmes.

DIPLOMA IN CHINESE

DURATION: 2 YEARS
SEMESTER INTAKE: FEBRUARY
IELTS: 5.5 (WITH NO BAND LOWER THAN 5.0)

This is designed to advance skills in Chinese. It aims to improve fluency in written and spoken language for daily communication and in the workplace.

Graduates will be eligible to continue study into the Bachelor of Arts (Chinese) and conjoint degree with the Bachelor of Business.

DIPLOMA IN ENGLISH LANGUAGE

DURATION: 1 YEAR
SEMESTER INTAKE: FEBRUARY/JULY
IELTS: 5.5 (WITH NO BAND LOWER THAN 5.0)

This is designed for students who have English as an additional language. It assists students with English skills needed for study at degree level, covering listening skills, academic writing, referencing, research processes, reading academic texts and academic vocabulary. Students experience giving formal presentations and learn how to speak confidently and persuasively.

Some papers can also cross-credit to AUT's Bachelor of Arts English Language major.

DIPLOMA IN JAPANESE

DURATION: 1 YEAR
SEMESTER INTAKE: FEBRUARY/JULY
IELTS: 5.5 (WITH NO BAND LOWER THAN 5.0)

This develops a sound base in spoken and written communication and an understanding of Japanese society and culture. Students learn word processing and Japanese computer software. Independent research is undertaken and written and presented in Japanese.

It is possible to cross-credit from this diploma to the BA (Japanese).

BACHELOR OF ARTS (ENGLISH LANGUAGE)

DURATION: 3 YEARS
SEMESTER INTAKE: FEBRUARY/JULY
IELTS: 6.5 (WITH NO BAND LOWER THAN 6.0)

This course focuses on two areas: 1) the use of language as an object of study and how English is used. 2) language and literature. Students will develop a variety of English skills including communication, cultural and literary appreciation, linguistic and literary analysis. Graduates will be able to identify key written and spoken styles in English and interpret their special features and origins.

BACHELOR OF ARTS (JAPANESE)

DURATION: 3 YEARS
SEMESTER INTAKE: FEBRUARY/JULY
IELTS: 6.5 (WITH NO BAND LOWER THAN 6.0)

This combines study of Japanese language, society and culture. Students gain communication, technology and research skills. Fluency is achieved in all areas of language required for daily communication, including in the workplace. The programme includes computer skills in Japanese software and multimedia.

BACHELOR OF ARTS (CHINESE)

DURATION: 3 YEARS
SEMESTER INTAKE: FEBRUARY/JULY
IELTS: 6.5 (WITH NO BAND LOWER THAN 6.0)

This develops knowledge and skills in Chinese language and culture and combines intensive Chinese language learning with skills in communication, technology and research.

BACHELOR OF ARTS & BACHELOR OF BUSINESS CONJOINT DEGREE

DURATION: 1 YEAR
SEMESTER INTAKE: FEBRUARY/JULY
IELTS: 6.5 (WITH NO BAND LOWER THAN 6.0)

Any of the BA majors can be combined with a range of Business majors.

BACHELOR OF ARTS (HONOURS) IN APPLIED LANGUAGE STUDIES

DURATION: 1 YEAR
SEMESTER INTAKE: FEBRUARY/JULY
IELTS: 6.5 (WITH WRITING 7.0 AND ALL OTHER BANDS NO LOWER THAN 6.0)

This degree offers advanced education and professional study in general and social linguistics, inter-cultural communication and research methodology.

Graduates can go on to the Master of Arts in Applied Language Studies or Doctor of Philosophy.

GRADUATE DIPLOMA IN TEACHING ENGLISH TO SPEAKERS OF OTHER LANGUAGES

DURATION: 1 YEAR
SEMESTER INTAKE: FEBRUARY/JULY
IELTS: 7.0 IN WRITING AND SPEAKING (6.5 IN ALL OTHER BANDS)

The Graduate Diploma in Teaching English to Speakers of Other Languages provides advanced theoretical knowledge and practical skills in language teaching to adults. It is for teachers of English to speakers of other languages.

Six graduate diploma papers may be cross-credited into the Master of Arts in Applied Language Studies.

MASTER OF ARTS IN APPLIED LANGUAGE STUDIES

DURATION: 2 YEARS
SEMESTER INTAKE: FEBRUARY/JULY
IELTS: 6.5 (7.0 IN WRITING, NO BAND LOWER THAN 6.0 IN ALL OTHER BANDS)

This masters degree offers graduates in English and other languages further study in general and social linguistics, discourse analysis, intercultural communication and research methodology. Students can specialize in: international organizational communication, second language teaching and learning (including ESL), translation, interpreting, literacy development and language awareness studies.

SOCIAL SCIENCES

faculty of applied humanities

Social Sciences provide much of the core knowledge for the growth area in the jobs of the future – in human services, social research, administration, policy, research, advocacy, and management, and across the public, not-for-profit and private sectors.

SOCIAL SCIENCES STUDY PATHWAY



PLEASE NOTE: 1. Completion of one programme does not guarantee entry to a higher-level programme. 2. Students are encouraged to apply for the programme for which they are best qualified and are not necessarily required to enrol in the programme that appears at the start of the above diagram. 3. Some programmes in the above study pathways diagram may be prerequisites to – and not credit towards – higher level programmes.

CERTIFICATE IN CONFLICT RESOLUTION

DURATION:	1 YEAR
SEMESTER INTAKE:	FEBRUARY/JULY
IELTS:	6.5 (NO BAND LOWER THAN 6.0)

This certificate is for mature students with some professional or community experience. It can be studied with the BA (Social Sciences).

The course covers issues and skills in dealing with conflict internationally and within every level of society. Skills gained are conflict analysis and research, negotiation, mediation, application of models of conflict management and resolution.

CERTIFICATE IN SOCIAL SCIENCES

DURATION:	1 YEAR
SEMESTER INTAKE:	FEBRUARY/JULY
IELTS:	5.5

The certificate serves as an introductory programme to the Bachelor of Arts (Social Sciences) or Bachelor of Arts (Psychology).

It gives a base in written and oral communication, computing and using data, and presenting clear academic arguments. It also introduces sociology, psychology, political studies and economics.

BACHELOR OF ARTS – SOCIAL SCIENCES

DURATION:	3 YEARS
SEMESTER INTAKE:	FEBRUARY/JULY
IELTS:	6.5 (NO BAND LOWER THAN 6.0)

This degree provides a mix of five key social sciences: sociology, psychology, political studies, anthropology and economics. It develops skills in critical evaluation and analysis of social issues and change, international politics, ethics and human behaviour as well as the ability to retrieve and analyse data.

BACHELOR OF ARTS – PSYCHOLOGY

DURATION:	3 YEARS
SEMESTER INTAKE:	FEBRUARY/JULY
IELTS:	6.5 (NO BAND LOWER THAN 6.0)

Psychology is the scientific study of individual behaviour. This degree provides a sound understanding of the key principles of human behaviour and practical uses of psychology in business settings. It also provides a foundation for postgraduate study leading to a professional career in psychology.

BACHELOR OF ARTS – SOCIAL SCIENCES & BACHELOR OF BUSINESS (CONJOINT DEGREE)

DURATION:	4 YEARS
SEMESTER INTAKE:	FEBRUARY/JULY
IELTS:	6.5 (NO BAND LOWER THAN 6.0)

BACHELOR OF ARTS – PSYCHOLOGY & BACHELOR OF BUSINESS (CONJOINT DEGREE)

DURATION:	4 YEARS
SEMESTER INTAKE:	FEBRUARY/JULY
IELTS:	6.5 (NO BAND LOWER THAN 6.0)

BACHELOR OF ARTS (HONOURS) IN SOCIAL SCIENCES

DURATION:	1 YEAR
SEMESTER INTAKE:	FEBRUARY/JULY
IELTS:	6.5 (WITH NO BAND LOWER THAN 6.0 AND WRITING NO LOWER THAN 7.0)

The degree focuses on research-based study leading to doctoral study. Students learn to critically evaluate and apply relevant international literature and research. Theoretical and research skills are applied in a specific area with opportunities for some overseas study.

MASTER OF ARTS – SOCIAL SCIENCES

DURATION:	2 YEARS
SEMESTER INTAKE:	FEBRUARY/JULY
IELTS:	6.5 (WITH NO BAND LOWER THAN 6.0 AND WRITING NO LOWER THAN 7.0)

This degree is designed for social science graduates with emphasis on social research and the analysis of social policy from local to international levels. There is an option to complete either a one-year thesis, or a dissertation combined with a research project completed within an outside organisation.

MASTER OF ARTS – HUMAN SERVICES

DURATION:	2 YEARS
SEMESTER INTAKE:	FEBRUARY/JULY
IELTS:	6.5 (WITH NO BAND LOWER THAN 6.0 AND WRITING NO LOWER THAN 7.0)

'Human Services' refers to support services for individuals, families and communities in the areas of business, education, health, housing, justice, policing and social welfare. The course covers social policy, organisational and management issues and the theory and research behind Human Services. Emphasis is on combining theory with practice.

There is an option to complete either a one-year thesis, or a dissertation combined with a research project completed within an outside organisation.

MASTER OF ARTS – SOCIAL POLICY

DURATION:	2 YEARS
SEMESTER INTAKE:	FEBRUARY/JULY
IELTS:	6.5 (WITH NO BAND LOWER THAN 6.0 AND WRITING NO LOWER THAN 7.0)

'Social Policy' is linked to advancing economic and social wellbeing and includes health, education, justice, housing and welfare. The course involves government, voluntary and private organisations with a focus on using knowledge and skills in a wide variety of environments.

JENIA MALAKHOVSKAYA

EKATERINBURG, RUSSIA BACHELOR OF SOCIAL SCIENCES

My mother has always wanted me to have the opportunity to live and study abroad so when I was in high school we attended a NZ Education Fair. This set me on my future path and I arrived in NZ to attend English Language school with only two words of English in my vocabulary. I became interested in politics and public relations so started studying the Certificate in Communication Studies for one year and then progressed to a degree in Social Sciences which I am still studying.

Initially I felt Auckland was very small and touristy but now I enjoy the cafes, beaches and nightclubs.

AUT has small classes that are very multicultural and I think the friendly staff are an asset. I am finding the studying different to home as it is geared towards producing weekly assignments rather than just cramming at the end of each semester.

Being independent and studying at AUT is a great life.

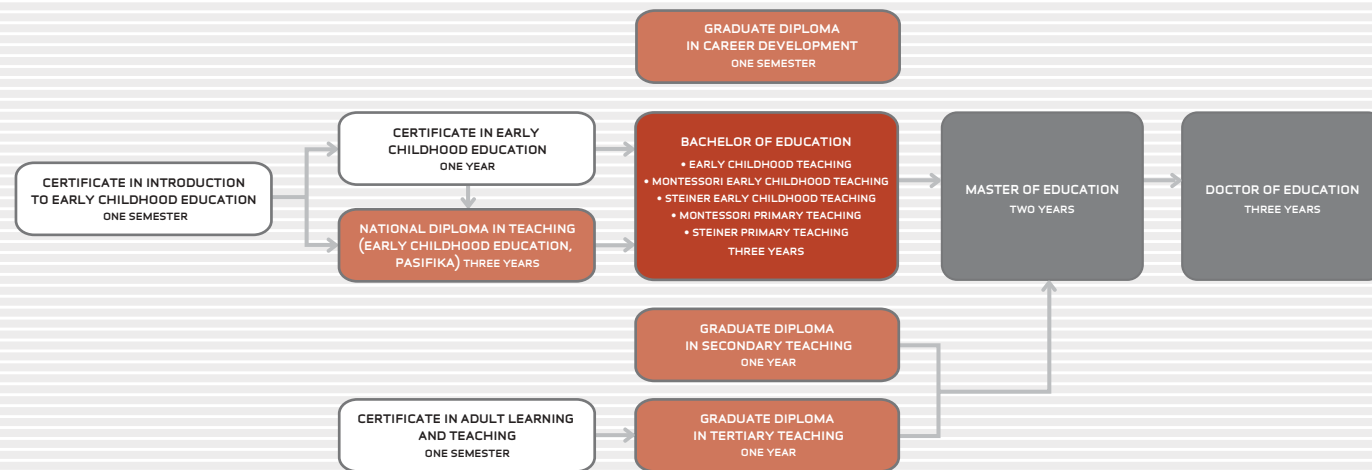


EDUCATION

faculty of applied humanities

AUT's School of Education offers early years, primary, secondary, adult and tertiary teacher education programmes at a variety of entry levels. In line with our vision, we have developed additional teacher-education programmes with a difference – in Montessori, Pasifika, and Steiner

EDUCATION STUDY PATHWAY



PLEASE NOTE: 1. Completion of one programme does not guarantee entry to a higher-level programme. 2. Students are encouraged to apply for the programme for which they are best qualified and are not necessarily required to enrol in the programme that appears at the start of the above diagram. 3. Some programmes in the above study pathways diagram may be prerequisites to – and not credit towards – higher level programmes.

CERTIFICATE IN INTRODUCTION TO EARLY CHILDHOOD EDUCATION

DURATION: 1 SEMESTER
SEMESTER INTAKE: FEBRUARY/JULY
IELTS: 4.5

This gives students the skills, abilities and confidence for further tertiary study. It covers child development, observations, play, Tikanga Māori, communication studies and professional development. It includes practical experience in a range of early childhood centres and nurtures positive attitudes to the wellbeing of children, family/whanau and colleagues, especially within Pasifika contexts.

Students are eligible to continue to the Certificate in Early Childhood Education or National Diploma in Teaching (Early Childhood Education, Pasifika).

CERTIFICATE IN EARLY CHILDHOOD EDUCATION

DURATION: 1 YEAR
SEMESTER INTAKE: FEBRUARY/JULY
IELTS: 5.5 (WITH NO BAND LOWER THAN 5.0)

This certificate allows students to gain confidence and competence in a range of abilities and skills necessary for successful tertiary learning. All students will experience student teaching in Early Childhood Centres.

BACHELOR OF EDUCATION – EARLY CHILDHOOD TEACHING

DURATION: 3 YEARS
SEMESTER INTAKE: FEBRUARY/JULY
IELTS: 6.5 (WITH NO BAND LOWER THAN 6.0)

This is designed to give early childhood teachers the skills, knowledge and attitudes required in an early childhood setting. Students will develop the

character, understanding and skills to enable effective teaching. Biculturalism is an important aspect of the course, with cross-cultural and person-to-person communication. Students will experience teaching in a range of settings.

High-achieving students could progress to the Master of Education.

BACHELOR OF EDUCATION – MONTESSORI EARLY CHILDHOOD TEACHING

DURATION: 3 YEARS
SEMESTER INTAKE: FEBRUARY/JULY
IELTS: 6.5 (WITH NO BAND LOWER THAN 6.0)

Students experience teaching in a range of settings at first, then focus on Montessori Centres. Students in the Montessori major will be recognised by the Montessori Association of New Zealand (MANZ) as qualified teachers for Montessori early childhood education.

BACHELOR OF EDUCATION – STEINER EARLY CHILDHOOD TEACHING

DURATION: 3 YEARS
SEMESTER INTAKE: FEBRUARY/JULY
IELTS: 6.5 (WITH NO BAND LOWER THAN 6.0)

This course is developed with the Federation of Rudolf Steiner (Waldorf) Schools in NZ to advance teacher specialisation in Steiner philosophy and practice. The course offers the first state-recognised Steiner qualifications available in New Zealand. There are over 900 Steiner (Waldorf) schools, and 1,800 early childhood centres internationally.

BACHELOR OF EDUCATION – MONTESSORI PRIMARY TEACHING

DURATION: 3 YEARS
SEMESTER INTAKE: FEBRUARY/JULY
IELTS: 6.5 (WITH NO BAND LOWER THAN 6.0)

This degree integrates theory and practice to give a sound base of knowledge relevant to teaching in Montessori and state schools, and nurtures the importance of relationships and communication for effective learning. Students experience teaching in a range of settings within schools and Montessori units, enabling them put theory into practice.

BACHELOR OF EDUCATION – STEINER PRIMARY TEACHING

DURATION: 3 YEARS
SEMESTER INTAKE: FEBRUARY/JULY
IELTS: 6.5 (WITH NO BAND LOWER THAN 6.0)

The Bachelor of Education (Steiner Primary Teaching) is designed to equip educators with the skills, knowledge and dispositions they need to be effective primary and intermediate teachers, in Steiner settings and in state schools. The programme integrates theory and practice, and has been developed with regard to the context of education within New Zealand.

BACHELOR OF ARTS (HONOURS) IN EDUCATION

DURATION: 1 YEAR
SEMESTER INTAKE: FEBRUARY/JULY
IELTS: 6.5 (WITH NO BAND LOWER THAN 6.0)

This degree provides an alternative route for high-achieving students interested in research-based study leading to doctoral study. It develops knowledge and skills in critical analysis and the application of education theory. Students will be able to present theoretical and grounded perspectives to a wide range of issues and contexts in education.

GRADUATE DIPLOMA IN SECONDARY TEACHING

DURATION: 1 YEAR
SEMESTER INTAKE: FEBRUARY/JULY
IELTS: 7.0 (IN ALL BANDS)

Students will be equipped with the knowledge, skills and capabilities for a rewarding career in secondary education. The diploma equally balances professional study (based at the University) with practical experience (based in secondary schools), ensuring that graduates have the skills to be effective teachers.

DOCTOR OF EDUCATION

DURATION: 3 YEARS
SEMESTER INTAKE: FEBRUARY/JULY
IELTS: 7.0 (WRITING)

This degree is designed to provide practitioners from diverse contexts the opportunity to extend their professional and academic knowledge base in educational practices and issues.



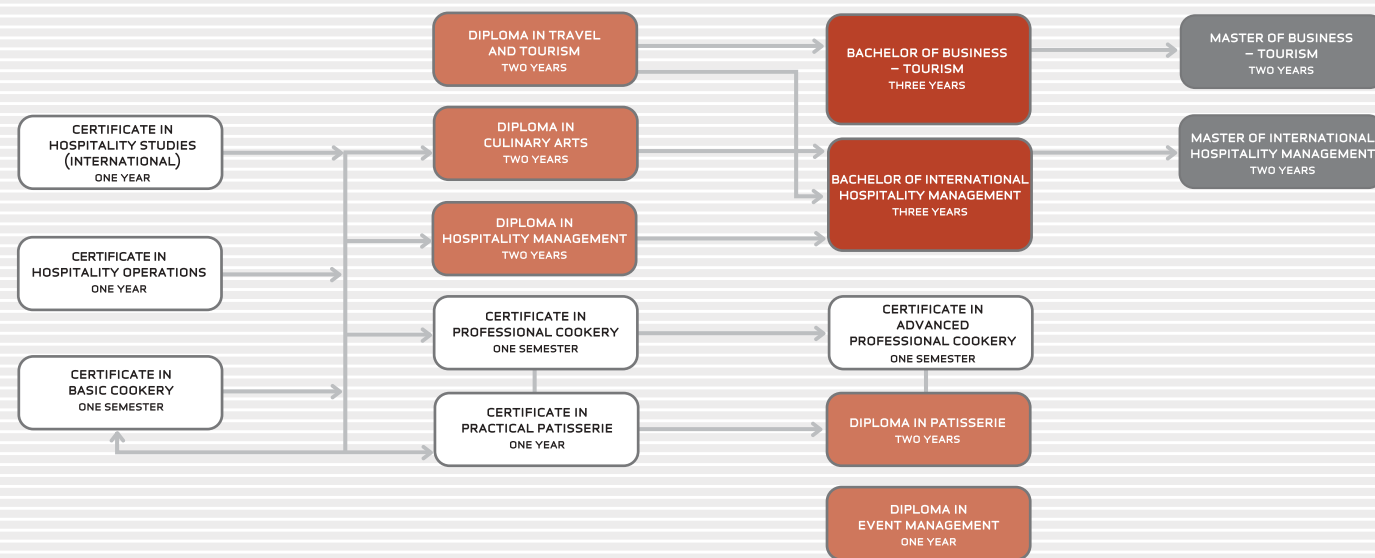
HOSPITALITY AND TOURISM

faculty of applied humanities

Hospitality and tourism are in an exciting growth phase, with outstanding employment opportunities in both the local and international marketplace. Training facilities at the School of Hospitality are among the best in Australasia. Many AUT graduates are climbing the career ladders in the airline, hotel, restaurant and tourism industries. AUT offers top-level skills that open employment doors worldwide.

Students can also interact with the New Zealand Tourism Research Institute, based at AUT. The institute brings together experts in the tourism and hospitality arena to develop timely and innovative research solutions for the tourism industry and those who depend on it. Its focus is on helping to develop a profitable and sustainable industry which provides tangible benefits for business, residents and visitors.

88HOSPITALITY AND TOURISM STUDY PATHWAY



PLEASE NOTE: 1. Completion of one programme does not guarantee entry to a higher-level programme. 2. Students are encouraged to apply for the programme for which they are best qualified and are not necessarily required to enrol in the programme that appears at the start of the above diagram. 3. Some programmes in the above study pathways diagram may be prerequisites to – and not credit towards – higher level programmes.

CERTIFICATE IN BASIC COOKERY INCORPORATING THE NATIONAL CERTIFICATE IN HOSPITALITY (COOKERY LEVEL 2)

DURATION: 1 SEMESTER
SEMESTER INTAKE: FEBRUARY/JULY
IELTS: 5.5 (WITH NO BAND LOWER THAN 5.0)

This is designed to introduce students to the key skills of kitchen operations, food production and restaurant service and is a foundation for students who wish to become professional chefs.

CERTIFICATE IN PROFESSIONAL COOKERY

DURATION: 2 SEMESTERS
SEMESTER INTAKE: FEBRUARY/JULY
IELTS: 5.5 (WITH NO BAND LOWER THAN 5.0)

This looks at the whole catering cycle from purchase of raw materials, receiving and storage to processing, selling and serving. The course covers business aspects of food production. Successful graduates may advance to the Certificate in Advanced Professional Cookery.

CERTIFICATE IN ADVANCED PROFESSIONAL COOKERY

DURATION: 1 SEMESTER
SEMESTER INTAKE: FEBRUARY/JULY
IELTS: 5.5 (WITH NO BAND LOWER THAN 5.0)

This is the most advanced Professional Cookery programme available in New Zealand expanding students' range of traditional and contemporary dishes and techniques, and covers kitchen management, information technology for hospitality,

marketing and menus. Graduates are equipped to take on a more senior role within a professional kitchen. Graduates may apply for the Diploma in Patisserie.

CERTIFICATE IN PRACTICAL PATISSERIE

DURATION: 1 YEAR
SEMESTER INTAKE: FEBRUARY/JULY
IELTS: 5.5 (WITH NO BAND LOWER THAN 5.0)

This introduces students to the fundamental skills and knowledge required to work in the patisserie department of a commercial kitchen. The course ends with a buffet presentation. Graduates may apply for the Diploma in Patisserie.

CERTIFICATE IN HOSPITALITY STUDIES (INTERNATIONAL)

DURATION: 1 YEAR
SEMESTER INTAKE: FEBRUARY/JULY
IELTS: 5.5 (WITH NO BAND LOWER THAN 5.0)

This certificate is specially designed for international students who have an interest in food and beverage operations and the hospitality industry. It covers basic skills in professional cookery, restaurant and wine service, business communication for hospitality and a range of introductory business subjects.

CERTIFICATE IN HOSPITALITY OPERATIONS

DURATION: 1 YEAR
SEMESTER INTAKE: FEBRUARY/JULY
IELTS: 5.5 (WITH NO BAND LOWER THAN 5.0)

This course is suitable for a wide range of prospective students from school leavers through to mature students wishing to work in the hospitality industry. It teaches practical knowledge of food and beverage service and basic commercial cookery skills. Students may also move on to further study within the School of Hospitality and Tourism.

DIPLOMA IN PATISSERIE

DURATION: 2 YEARS
SEMESTER INTAKE: FEBRUARY/JULY
IELTS: 6.0 (WITH NO BAND LOWER THAN 5.5)

This is a practical course with a strong theoretical, creative and business foundation. It creates a platform for this specialist culinary sector in international hotels, restaurants, contract catering and bakeries through to owner-operated small businesses.

DIPLOMA IN CULINARY ARTS

DURATION: 2 YEARS
SEMESTER INTAKE: FEBRUARY/JULY
IELTS: 6.0

This course takes students through the three stages of professional cookery plus kitchen management, hospitality, information technology for hospitality and advanced beverage service. Students can also choose specific study in food and beverage management, human resources, event planning or gastronomy.

DIPLOMA IN HOSPITALITY MANAGEMENT

DURATION: 2 YEARS
SEMESTER INTAKE: FEBRUARY/JULY
IELTS: 6.0 (IN WRITING)

Master the fundamentals of food and beverage service, culinary skills and front office operations. This course provides a solid grounding in business skills including financial operations and services marketing and is recognised by New Zealand's top hospitality operators and the Hotel and Catering Institutes Management Association (HCIMA) in London.

Graduates may apply for entry to the Bachelor of International Hospitality Management.

DIPLOMA IN EVENT MANAGEMENT

DURATION: 1 YEAR
SEMESTER INTAKE: FEBRUARY/JULY
IELTS: 6.5 (WITH NO BAND LOWER THAN 6.0)

This course covers the theory and operational skills required for successful event management. Practical skills are developed in papers such as advanced beverage studies, event planning, event design and production. Students also study papers in marketing, public relations, communication and information technology.

DIPLOMA IN TRAVEL AND TOURISM

DURATION: 2 YEARS
SEMESTER INTAKE: FEBRUARY/JULY
IELTS: 6.0 (IN WRITING)

This covers core business skills related to travel and tourism including accounting, economics, law, organisation and management, marketing, distribution, information systems and product development. Graduates will be equipped for a wide range of opportunities within the expanding travel and tourism industries.

BACHELOR OF INTERNATIONAL HOSPITALITY MANAGEMENT

DURATION: 3 YEARS
SEMESTER INTAKE: FEBRUARY
IELTS: 6.5 (WITH NO BAND LOWER THAN 6.0)

This degree reflects the international focus of the hospitality industry. Core papers contain the body of knowledge, skills and techniques necessary for the management of a hospitality business. A choice of other papers gives students the chance to gain in-depth knowledge of specific subjects.

Graduates could proceed to a Masters Degree in International Hospitality Management.

BACHELOR OF INTERNATIONAL HOSPITALITY MANAGEMENT AND BACHELOR OF BUSINESS CONJOINT DEGREE

DURATION: 4 YEARS
SEMESTER INTAKE: FEBRUARY/JULY
IELTS: 6.5 (WITH NO BAND LOWER THAN 6.0)

In addition to the Degree in International Hospitality Management, BIHM/BBus students can choose one of the following majors for the business degree component: Accounting, Advertising, Business Economics, Commercial Law, eBusiness, Information Technology, International Business, Management, Marketing and Tourism.

MASTER OF INTERNATIONAL HOSPITALITY MANAGEMENT (incorporating Postgraduate Certificate in International Hospitality Management and Postgraduate Diploma in International Hospitality Management)

DURATION: 2 YEARS
SEMESTER INTAKE: FEBRUARY/JULY
IELTS: 7.0 (WITH 7.0 IN WRITING AND NO LOWER THAN 6.5 IN ALL OTHER BANDS)

This degree prepares students for senior management roles within the global hospitality industry, or further postgraduate study.

Year 1 students study:

- Strategic issues in International Hospitality Management
- Human Behaviour in Hospitality Organisations
- Contemporary topic in International Hospitality Management
- Research methods

Year 2 – students complete a dissertation or a thesis plus two electives

TE ARA POUTAMA (MĀORI STUDIES)

faculty of māori development

Te Ara Poutama delivers Māori values within a relevant and modern context. AUT offers one of the best and most supportive Māori faculties in Aotearoa-New Zealand. Programmes are taught from a Māori perspective but identify and value the identity of all people.

DIPLOMA IN CULTURAL TOURISM AND TRAVEL

DURATION:	2 YEARS
SEMESTER INTAKE:	FEBRUARY/JULY
IELTS:	6.5 WITH NO BAND LOWER THAN 6.0

This diploma introduces students to travel and tourism and draws together the key strands of mono, bi and multi-cultural tourism development. Students acquire an appreciation of the global tourism market and its impact on Aotearoa/New Zealand.

CERTIFICATE IN ART AND DESIGN (INTERMEDIATE) HE AKORANGA TOI

DURATION:	1 YEAR
SEMESTER INTAKE:	FEBRUARY
IELTS:	5.5

This certificate's focus is Māori and Pacifica art and design.

Te Reo (Māori Language) papers may be an elective part of the following degrees: Bachelor of Applied Science, Bachelor of Arts (Applied), Bachelor of Business, Bachelor of Communication Studies, Bachelor of Education (Early Childhood) and Speciality Teaching, Bachelor of Health Science, Bachelor of Information Technology, Bachelor of International Hospitality Management, Bachelor of Māori Development.

PRE-DEPARTURE CHECKLIST

- Organise your student visa – contact the NZ High Commissioner or the embassy in your home country to obtain an application form
- Ensure your passport is valid for the intended length of study in NZ
- Start looking for long-term accommodation – for helpful advice visit www.aut.international.info
- Pack a document folder containing your Offer of Place letter, academic transcripts from previous study, identification documents etc
- Organise to have at least \$2000 available to you on arrival in Auckland
- Have a medical, optical and dental check-up and organise any prescribed medication required
- Write down contact details of your country's embassy in New Zealand
- Write down the number of AUT's emergency contact number for international students 021 774 570

